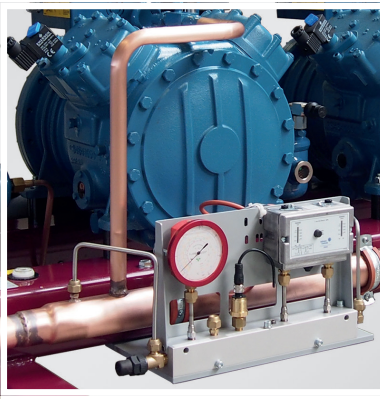


Blondelle®



REFRIGERATION TECHNOLOGIES

PANIMPEX LEAKDETECTION



metreco smart mobile measuring



PANIMPEX CATALOGUE 2026



SMART MOBILE MEASURING



GAUGES & VACUUM GAUGES
MANIFOLDS & HOSES



SUPER-SEAL



REFRIGERATION TECHNOLOGIES



MAINTENANCE & CALIBRATION

PANIMPEX NV

PANIMPEX NV has been producing the famous **Blondelle ‘A Lame Acier’** gauges successfully since 2001. Panimpex introduced the first CO2 Transcritical manifold successfully in 2006 and automotive CO2 quick couplers in 2014. In 2024, the CO2 manifold has been overhauled with new robust valves with smoother operation. In 2025 we introduced the same evolution for the 4-way CO2 manifold.

The **Blondelle** expertise in mechanical engineering and the know-how derived over 75 years of experience is the basis of the continuous drive for perfection and innovation in the production of pressure measurement instruments.

From this manufacturing and development know-how an innovation was born: **Metreco - Smart Mobile Measuring**. This industry innovation will change the way technicians work.

With more than 20 years of experience in hand leak detectors Panimpex has selected and designed a calibrated reference leak and is co-branding this with the manufacturer HTP as **Panimpex Leak Detection**. The calibrated leak is F-GAS certified!

Diversitech markets the **Super Seal** in Europe Refrigeration markets through Panimpex NV.

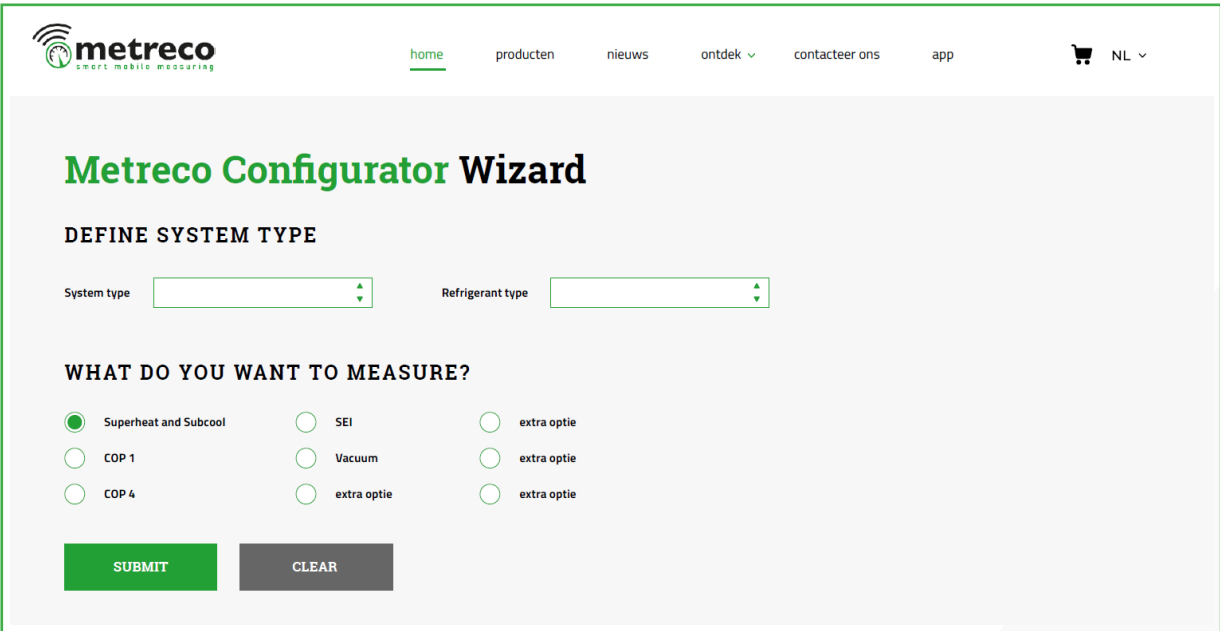
Refrigeration Technologies Inc., is located in Fullerton (CA) USA, and goes to market in Europe through Panimpex NV as a master distributor with their products Viper, Big Blu, Nylog etc.

In our continuous strive for quality and customer service we are ISO9001:2015 certified.

ISO 9001:2015 certified by the LRQA Limited



Discover the Configurator on www.metreco.com !



The screenshot shows the Metreco Configurator Wizard interface. At the top left is the Metreco logo. The navigation menu includes 'home', 'producten', 'nieuws', 'ontdek', 'contacteer ons', 'app', and a shopping cart icon with 'NL'. The main heading is 'Metreco Configurator Wizard'. Below it is the section 'DEFINE SYSTEM TYPE' with two dropdown menus for 'System type' and 'Refrigerant type'. The next section is 'WHAT DO YOU WANT TO MEASURE?' with a grid of radio button options: 'Superheat and Subcool' (selected), 'COP 1', 'COP 4', 'SEI', 'Vacuum', and 'extra optie' (three instances). At the bottom are 'SUBMIT' and 'CLEAR' buttons.



METRECO

smart mobile measuring

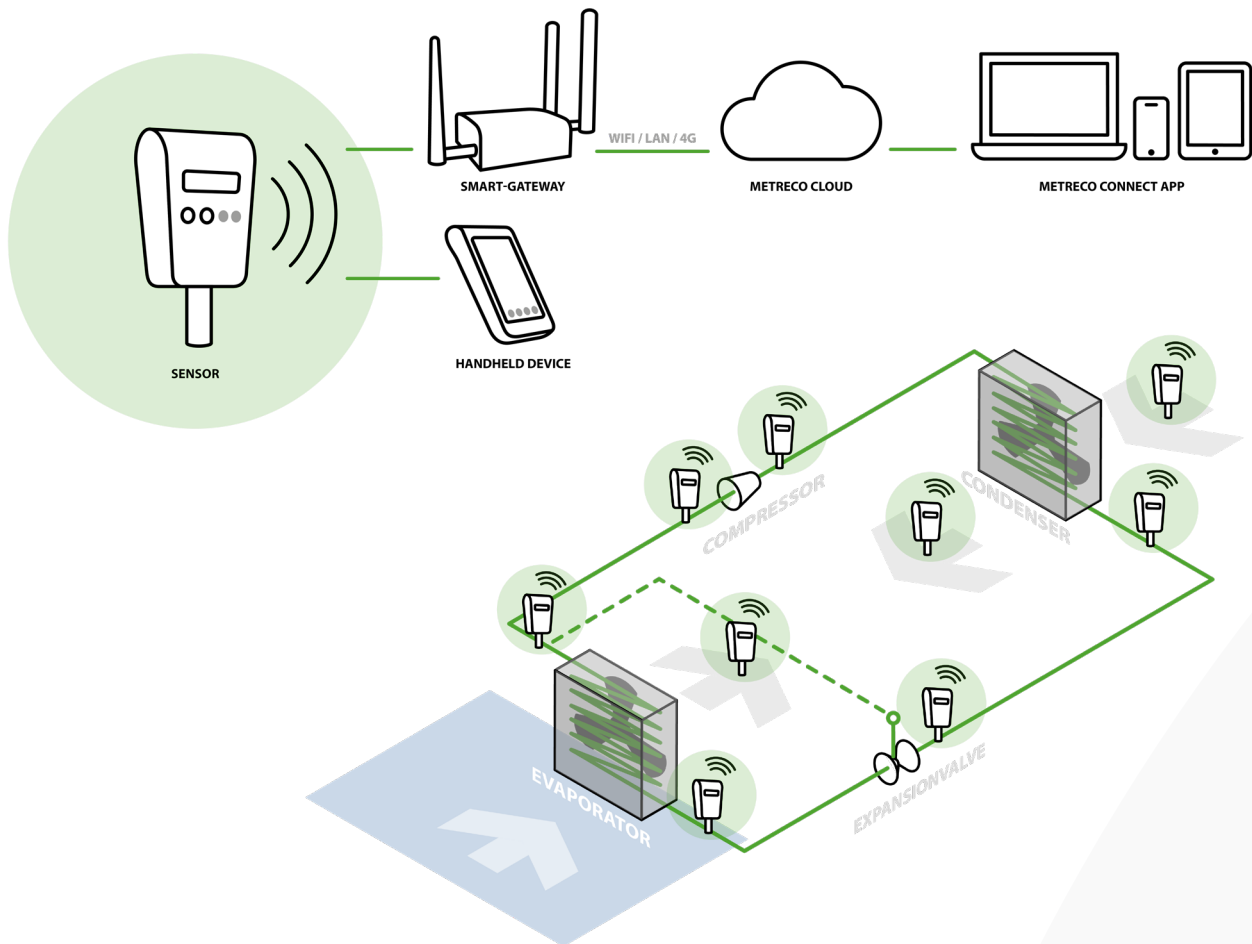
TRACK YOUR MEASUREMENTS



flexible  connected



Dynamic Control from your mobile devices & PC



Metreco Cloud Connect performs different types of measurements

- ✓ Instantaneously :
1h - 1 day commissioning, or troubleshooting
- ✓ Medium and long term monitoring :
1 to 4 weeks (troubleshooting, retrofit, etc.) 1 to 12 months and more (COP, etc.)

Wireless sensors are positioned on the installation, they transmit the data to a gateway which sends them to the Cloud. Up to 20 sensors can be used per gateway depending on the size of the system to be analyzed.

The results can be viewed on computer, tablet, smartphone via an application. It is possible to use several gateways on the same site and also to analyze several sites, geographically separated, using several gateways .

info@metreco.com



Why choose CLOUD Connect?

- ✓ easy monitoring, visualization and reporting of all critical values
- ✓ measurements, logging, short term & long term monitoring
- ✓ analysis of 1 system or several units
- ✓ connect to the Metreco CLOUD Connect with the Smart-Gateway through 4G & Ethernet
- ✓ ad hoc measurement, measurement campaign, logging and monitoring
- ✓ commissioning
- ✓ troubleshooting
- ✓ optimization of energy efficiency



DIAGNOSTICS

The analyzer makes it possible to identify the source of a failure very quickly and to intervene on the system without delay.



MONITORING

It controls the operation of the system when starting up or modifying an installation.



COP

It measures the energy efficiency of the installation to achieve energy savings.

CLOUD application

- ✓ energy performance indicators: COP, SCOP, SEER, SPF, SEI & COP / SEI Layers
- ✓ alerts and warnings
- ✓ traceable reporting, pressure test and vacuum test
- ✓ data analysis and Benchmarking
- ✓ Multi-site trend comparisons



ADVANTAGES Metreco Cloud Connect



✓ Contractor advantages : Time savings

Simple system setup: wireless sensors are positioned on the selected points, they are recharged directly from the mains.

Autonomy of the sensors, from 1 week to +6 months, depending on the frequency of data transmission.

Remote consultation of measurements on computer, tablet, smartphone via the Metreco Cloud Connect application.

✓ Customer advantages : Financial gains

Monitoring: monitoring of the correct functioning of the installations (prevention of breakdowns, maintenance).

Quick restart in the event of a breakdown (avoids / limits operating losses).

Real-time COP monitoring (energy savings).

✓ Assurance for the contractor and customer : Reliability gains

Metreco COP was verified by POLE CRISTAL, an independent laboratory located in Dinan (France). The comparative tests were carried out in accordance with standard EN 14511.

Sensors



20 bar pressure sensor



50 bar pressure sensor



temperature sensor



amperage sensor



local measurements handheld



CLOUD Connect Smart-Gateway


Short or long term needs?

The sensors battery life depends on the send frequency, change the frequency depending according to the needs of your next project:

- ✓ 1s / 15s / 30s / 1min
- ✓ 1s = ±1 week / 60s = ±6 months (depending on sensor type)

The sensors are charged with a USB cable, included with every sensor.

Discover the Configurator on www.metreco.com !



[home](#) [producten](#) [nieuws](#) [ontdek](#) [contacteer ons](#) [app](#) NL

Metreco Configurator Wizard

DEFINE SYSTEM TYPE

System type Refrigerant type

WHAT DO YOU WANT TO MEASURE?

<input checked="" type="radio"/> Superheat and Subcool	<input type="radio"/> SEI	<input type="radio"/> extra optie
<input type="radio"/> COP 1	<input type="radio"/> Vacuum	<input type="radio"/> extra optie
<input type="radio"/> COP 4	<input type="radio"/> extra optie	<input type="radio"/> extra optie

SUBMIT

CLEAR

Metreco Standard Pressure Sensors

Standard refrigerants: HFC, HFO, CFC, HCFC & CO2 Subcritical



- -1+20 bar pressure sensor, 1/4"SAE female
- -1+50 bar pressure sensor, 1/4"SAE female
- USB-charging (cable supplied)

- HFC, HFO and CO2 Subcritical
- Suitable for measuring oil pressure
- Precision: Class 0,5 (0,5% FS)
- Overpressure: 40 bar / 100 bar
- Burst overpressure: 70 bar / 150 bar

- Autonomy
 - Battery : 7 days → +7 months (depending on transmission frequency : 1s / 15s / 30s / 1min)
 - USB-grid : unlimited
- Battery: LiPo (Lithium Ion Polymer)
- Wireless range: min. 200m (open air)
- Protection: IP64 with cap closed

- Product code:
 - LP: Pb0020M14S-C
 - HP: Pb0050M14S-C

Metreco CO2 Transcritical Pressure Sensors

CO2 Transcritical



- -1+100 bar pressure sensor, 1/4"SAE female, CO2 Transcritical LP
- -1+200 bar pressure sensor, 1/4"SAE female, CO2 Transcritical HP
- USB-charging (cable supplied)

- CO2 Transcritical, HFC, HFO and CO2 Subcritical
- Suitable for measuring oil pressure
- Precision: Class 0,5 (0,5% FS)
- Overpressure (100/200 bar) : 200 bar / 400 bar
- Burst overpressure (100/200 bar) : 250 bar / 450 bar

- Autonomy
 - Battery : 7 days → +7 months (depending on transmission frequency : 1s / 15s / 30s / 1min)
 - USB-grid : unlimited
- Battery: LiPo (Lithium Ion Polymer)
- Wireless range: min. 200m (open air)
- Protection: IP64 with cap closed

- Product code:
 - LP: Pb0100M14S-C
 - HP: Pb0200M14S-C



Metreco NH3 Pressure Sensors

NH3 - R717 - Ammonia



- -1+20 bar pressure sensor, stainless steel 1/4"SAE female, NH3
- -1+50 bar pressure sensor, stainless steel 1/4"SAE female, NH3
- USB-charging (cable supplied)
- R717 (NH3 - Ammonia), HFC, HFO and CO2 Subcritical
- Suitable for measuring oil pressure
- Precision: Class 0,5 (0,5% FS)
- Overpressure (20/50 bar) : 40 bar / 100 bar
- Burst overpressure (20/50 bar): 70 bar / 150 bar
- Autonomy
 - Battery : 7 days → +7 months (depending on transmission frequency : 1s / 15s / 30s / 1min)
 - USB-grid : unlimited
- Battery: LiPo (Lithium Ion Polymer)
- Wireless range: min. 200m (open air)
- Protection: IP64 with cap closed

- Product code:
LP: Pb0020i14S-C
HP: Pb0050i14S-C

Metreco NH3 Pressure Sensors

NH3 - R717 - Ammonia



- -1+100 bar pressure sensor, stainless steel 1/4"SAE female, NH3
- -1+100 bar pressure sensor, stainless steel 1/4"SAE female, NH3
- USB-charging (cable supplied)
- R717 (NH3 - Ammonia), HFC, HFO and CO2 Sub. & Transcr.
- Suitable for measuring oil pressure
- Precision: Class 0,5 (0,5% FS)
- Overpressure (100/200 bar) : 200 bar / 400 bar
- Burst overpressure (100/200 bar) : 250 bar / 450 bar
- Autonomy
 - Battery : 7 days → +7 months (depending on transmission frequency : 1s / 15s / 30s / 1min)
 - USB-grid : unlimited
- Battery: LiPo (Lithium Ion Polymer)
- Wireless range: min. 200m (open air)
- Protection: IP64 with cap closed

- Product code:
LP: Pb0100i14S-C
HP: Pb0200i14S-C

[home](#)

Metreco Configurator

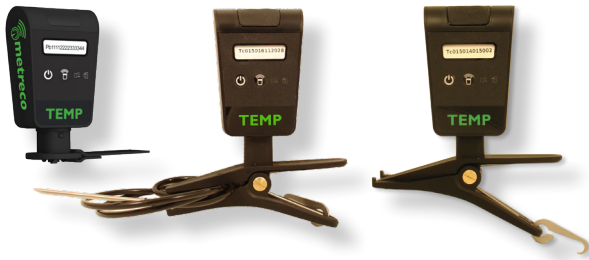
DEFINE SYSTEM TYPE

System type Refrigerant type

Discover the Configurator on www.metreco.com !

Metreco Temperature Sensors

PT1000 Sensor



- Range: -50+150°C
- Precision: 0,5°C
- USB-charging (cable supplied)
- Autonomy
 - Battery : 5 days → +6 months (depending on transmission frequency : 1s / 15s / 30s / 1min)
 - USB-grid : unlimited
- Battery: LiPo (Lithium Ion Polymer)
- Wireless range: min. 200m (open air)
- Protection: IP64 with cap closed
- With Velcro strap for pipe mount
- With clamp for ventilator air flow
- With Stick-in probe for product core temperature & water cooling curtains

- Product code:
Tc0150PV-C (Velcro)
Tc0150PK-C (Clamp)
Tc0150PP-C (Probe)

Metreco Absolute Vacuum Sensor

Absolute vacuum, does not need calibration before use



- Absolute vacuum sensor, does not need calibration before use
- USB-charging (cable supplied)
- Range: +1000mBar - 0mBar
- Precision: Class 0,5 (0,5% FS)
- Overpressure: 5 bar
- Standard Version
- Premium Version (with overpressure valve +60Bar and ball valve)
- Autonomy
 - Battery : 7 days → +7 months (depending on transmission frequency : 1s / 15s / 30s / 1min)
 - USB-grid : unlimited
- Battery: LiPo (Lithium Ion Polymer)
- Wireless range: min. 200m (open air)
- Protection: IP64 with cap closed

- Product code:
Standard : Vm1000M14S-C
Premium : Vm1000M14S-28-C (Ball valve)

Metreco Amperage Sensor

With easy to apply Rogowski coil



- Electrical intensity
- 2 Amperage ranges in 1 device: 0-25A & 0-500A
- Flexible Rogowski Coil
- USB-charging (cable supplied)
- Precision: $\pm 100\text{mA}$ (0-25A) & $\pm 250\text{mA}$ (0-500A)
- Autonomy
 - Battery : 4 days \rightarrow +3 months (depending on transmission frequency : 1s / 15s / 30s / 1min)
 - USB-grid : unlimited
- Battery: LiPo (Lithium Ion Polymer)
- Wireless range: min. 200m (open air)
- Protection: IP64 with cap closed
- Measure 1-phase or 3-phase
- Measure 3-phase with 1 sensor or more accurate with 3 sensors

▪ Product code: Ca0600RG-C

Metreco Radio-Signal Repeater

Range extender +150m - repeats all Metreco radio signals



- Radio frequency repeater
- Range extension: +150m
- USB-charging (cable supplied)
- Repeats all Metreco radio signals
- Combine multiple repeaters if necessary
- Autonomy
 - Battery : 3 days
 - USB-grid : unlimited
- Battery: LiPo (Lithium Ion Polymer)
- Protection: IP64 with cap closed
- Available with Velcro strap and clamp

▪ Product code: RPT01V-C (Velcro) - RPT01K-C (Clamp)

Metreco Cloud Connect Gateway

Connect to the Metreco Cloud using the Smart Gateway



GW01ST

GW01ET

- Expand your measuring options using the Smart Gateway
- 4G & Ethernet
- Up to 20 sensors per gateway
- Use of multiple gateways on multiple sites possible
- Metreco Cloud Connect Subscription necessary
- Smartphone & Tablet App - Android & IOS
- Desktop Webbrowser interface
- Also available in a economical only Ethernet version
- SIM card not included

▪ Product code:
GW01ST (4G/Ethernet)
GW01ET (Ethernet)

Metreco - Standard Case 2.0

smart mobile measuring - digital wireless system analyzer



Metreco Handheld

- Dynamic measuring with METRECO, Smart Mobile Measuring, instead of static measuring with traditional manifold with hoses and temperature probes.
- Up to 20 sensors transmit their measurements simultaneously to the Handheld: no hoses - no lines.
- The user positions himself where he wants/walks around and can read out the measurements in real time.
- Intuitive/natural easy-to-use interface is operated with a capacitive touchscreen.

- Define your measurement/value targets - get a warning when they are off.
- Measurement - Diagnosis - Suggestions / Solutions.
- Database of serviced ACR systems available on Handheld & PC.
- Measurement reports on Handheld & PC.

- Charge your handheld and sensor batteries via USB and wall charger.
- Extra hoses and connectors for handling refrigerant.



Metreco Sensors



Metreco is supplied with:

- 1 Carrying case, place for 10 sensors
- 1 Low Pressure Sensor 20 Bar
- 1 High Pressure Sensor 50 Bar
- 2 Temperature sensors -50+150°C
- Metreco Handheld with its 230V adaptor
- 4 USB cables for sensor charging
- Manual
- Set of hoses & connectors

- Product code: MT02ST

- Digital Wireless System Analyzer
- Measure and log all critical system data in real time, also COP

- Improve on-site efficiency - Be more professional
- No more running around- Speed up measurements
- Gain time substantially on each job

- Certified reporting and PED protocols
- Pressure and Vacuum Decay Tests
- All data such as Superheat, Subcool, Delta T&P and COP

- Optimize system efficiency with Metreco Smart-COP®
- Calculate Cooling Power with Ampclamp and Smart-COP®

Metreco NH3 Kit

Specially designed sensors and hoses for Ammonia applications



- 20 Bar Low pressure sensor
- 50 Bar High pressure sensor
- Stainless steel 1/4" SAE female connectors
- 2 USB charging cables
- 3 hoses
- Connectors: 1/4"SAE-1/4"GAS & 1/4"GAS-1/2"GAS & T-connector
- NH3 - R717 - Ammonia

▪ Product code: KN02ST

Metreco CO2 Transcritical Kit

Specially designed sensors and hoses for CO2 Transcritical applications



- 100 Bar Low pressure sensor
- 200 Bar High pressure sensor
- 2 USB charging cables
- 3 hoses
- CO2 Transcritical - R744

▪ Product code: KC02ST

Metreco Absolute Vacuum Kit

Absolute vacuum sensor & Valve core remover



- Absolute vacuum sensor (Class 0,5) Premium
- with safety valve (+60Bar)
- with ball valve
- Range: +1000mBar - 0mBar
- Valve core remover
- USB charging cable

▪ Product code: KV02ST

Metreco Product References

Panimpex Code	Description
Complete Product	
MT02ST	Metreco HVAC MK2: standard complete Metreco Set
MT02AA	Metreco complete set 2.0, without sensors - carrying case, handheld & accessories
Kits	
KV02ST	Kit Vacuum: Vacuum sensor (Overpressure- & Ball Valve) + schraeder remover
KC02ST	Kit CO2 Transcritical: 100Bar & 200Bar pressure sensors + hoses
KN02ST	Kit NH3: 20bar & 50Bar pressure sensors with Stainlesssteel couplers + hoses
Gateways & Cloud	
GW01ST	Smart Gateway - 4G & Ethernet
GW01ET	Smart Gateway - Ethernet
MTO1CC-Cloud-Fee	Metreco Cloud Connect Subscription - 1 year
MTO1CC-Cloud-AddGWFee	Metreco Cloud Connect Additional Gateway Subscription - 1 year
Handheld	
HH02ST	Metreco handheld standard 2.0, supplied with 230V wall charger
Sensors	
	<i>(USB cable charging only - cable supplied with each sensor)</i>
Pb0020M14S-C	-1+20 bar pressure sensor, brass 1/4"SAE female with schraeder depressor
Pb0050M14S-C	-1+50 bar pressure sensor, brass 1/4"SAE female with schraeder depressor
Pb0100M14S-C	-1+100 bar pressure sensor, brass 1/4"SAE female with schraeder depressor
Pb0200M14S-C	-1+200 bar pressure sensor, brass 1/4"SAE female with schraeder depressor
Pb0020I14S-C	-1+20 bar pressure sensor, stainless steel 1/4"SAE female (NH3)
Pb0050I14S-C	-1+50 bar pressure sensor, stainless steel 1/4"SAE female (NH3)
Pb0100I14S-C	-1+100 bar pressure sensor, stainless steel 1/4"SAE female (NH3)
Pb0200I14S-C	-1+200 bar pressure sensor, stainless steel 1/4"SAE female (NH3)
Tc0150PV-C	-50+150°C temperature sensor, Velcro
Tc0150PK-C	-50+150°C temperature sensor, Clamp
Tc0150PP-C	-50+150°C temperature sensor, Stick-sensor
Vm1000M14S-C	Absolute vacuum Sensor Standard
Vm1000M14S-28-C	Absolute vacuum Sensor Premium : Overpressure valve + Ball valve
RPT01V-C	Repeater: range extender +150m with Velcro
RPT01K-C	Repeater: range extender +150m with Clamp
Ca0600RG-C	Electrical intensity sensor: Amperage sensor with Rogowski coil - 0-600A
Accessories	
DS02ST	Standard Metreco 2.0 carrying case, 10 sensor placements
MA02ST	Standard accessories for Metreco 2.0 : hoses, couplers, adaptors
MA02ST contains :	
S41B12-150	Red hose, 1/4"SAE-1/4"SAE with ball-valve; 1,5m; teflon; 55 Bar
S41B13-150	Blue hose, 1/4"SAE-1/4"SAE with ball-valve; 1,5m; teflon; 55 Bar
S41B14-150	Yellow hose, 1/4"SAE-1/4"SAE with ball-valve; 1,5m; teflon; 55 Bar (2pcs in MA02ST)
AC0107-8101	T-connector 1/4"SAE female with swivel and 2x 1/4"SAE male with schraeder
AC0107-8102	X-connector 4x 1/4"SAE male
AC0107-7410	Adaptor 1/4"SAE - 5/16"SAE (2pcs in MA02ST)
Others	
CERTIF-ETAL	Sensor Calibration Certificat - individual Sensor ISO17025

Metreco Accessories & Spares

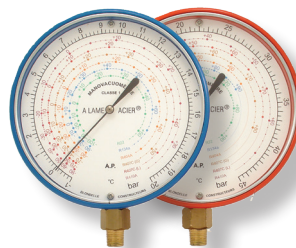
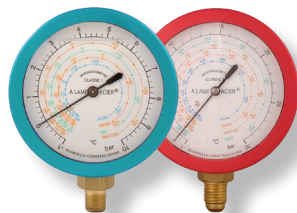
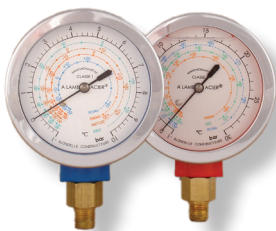
- Check our website: www.metreco.com
- Contact us: info@metreco.com

We strongly advise you to have your sensors calibrated yearly in accordance with European and local legislation!

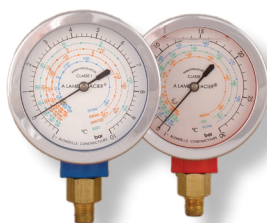




BLONDELLE GAUGES



Blondelle Pressure Gauge, Ø60, Aluminium, LP



- Class 1
- 'A Lame Acier' unique bellow mechanism, the highest durability and accuracy
- All combinations of refrigerants possible
- Each gauge calibrated individually
- Aluminium case

- Admissible overload: 200%
- Possibility to adjust the needle
- Dry or oil filled
- Outlet: vertical or rear
- Fitting: 1/4" SAE or 1/8" NPT

Low Pressure			Reference		Pressure		Refrigerants
Version	Outlet	Fitting	Case	Dial	psi	bar	
Dry	Vertical	1/4" SAE	MA0601V14S				
		1/8" NPT	MA0601V18B				
Oil filled	Rear	1/4" SAE	MA0601A14S				
		1/8" NPT	MA0601A18B				
	Vertical	1/4" SAE	MA1001V14S				
		1/8" NPT	MA1001V18B				
	Rear	1/4" SAE	MA1001A14S				
		1/8" NPT	MA1001A18B				
		1001				-1+10	R507+R404A+R407Cvap/liq
		1003				-1+10	R404A+R407Cvap/liq+R134a
		1005				-1+10	R134a+R407Cvap/liq
		1015				-1+30	R744
1017					-1+20	R410A	
1023					-1+20	R410A+R22+R134a+R407C	
1031				-1+20	R407Cvap/liq+R410A		
1035				-1+20	R134a+R404A+R410A+R22		
1037				-1+20	R407Cvap/liq+R410A+R22		
1123				-1+20	R134a+R404A+R407C+R410A		
1137				-1+10	R417Avap/liq+R422Dvap/liq		
1143				-1+10	R290+R600a		
1227				-1+10	R422D		
2003				-1+10	R134a+R404A+R507		
2005				-1+10	R508B		
2009				-1+10	R22+R507+R407Fvap		
2011				-1+10	R22+R407Cvap/liq		
2013				-1+10	R407Avap/liq+R407Fvap/liq		
2015				-1+20	R32+R410A		
2019				-1+10	R134a+R507+R407F		
2025				-1+10	R134a+R404A+R407C+R407F		
2027				-1+10	R134a+R404A+R407F		
2029				-1+10	R449A		
2031				-1+10	R427		
2033				-1+10	R448A+R449A		
2035				-1+20	R32+R410A+R134a+R407C		
2037				-1+10	R452a+R404A+R134a		
2039				-1+10	R134a+R404A+R450A+R407F		
2041				-1+10	R448A+R449A+R407F		
2043				-1+10	R1234yf+R1234ze+R134a		
2045				-1+20	R32+R410A+R407C		
2049				-1+10	R452A+R513A		
2051				-1+20	R32		
2053				-1+10	R449A+R450A+R452A+R513A		
2057				-1+10	R448A+R449A+R450A+R452A		
2059				-1+20	R290		
2061				-1+10	R404A+R407F+R448A		
2063				-1+10	R448A+R449A+R452A+R404A		
2065				-1+10	R134a+R404A+R449A+R507A		
2067				-1+10	R442A+R452A		
2069				-1+10	R407Cvap/liq		
2071				-1+10	R134A+R513a		
2073				-1+10	R134a+R404A+R448A+R452A		
2075				-1+10	R134a+R448A+R452A+R455A		
2077				-1+10	R454C		
2079				-1+20	R134a+R513A+R410A+R448A		
2081				-1+20	R407Cvap/liq		
2083				-1+10	R407C+R449A+R407F+R134a		
2085				-1+10	R515B+R1234yf+R1234ze+R134a		
2089				-1+10	R134a+R450A+R513A		
2095				-1+10	R455Avap/liq		
2097				-1+10	R1234yf+R1234ze+R134a+R513A		

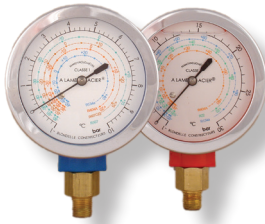


Low Pressure			Reference		Pressure		Refrigerants	
Version	Outlet	Fitting	Case	Dial	psi	bar		
Dry	Vertical	1/4" SAE	MA0601V14S					
		1/8" NPT	MA0601V18B					
Oil filled	Rear	1/4" SAE	MA0601A14S					
		1/8" NPT	MA0601A18B					
	Vertical	1/4" SAE	MA1001V14S					
		1/8" NPT	MA1001V18B					
	Rear	1/4" SAE	MA1001A14S		2099		-1+10	R513A+R134a+R1234yf
		1/8" NPT	MA1001A18B		2101		-1+10	R454C+R449A
					5992	-30+140	-1+10	R12+R22+R502
					6060	-30+140	-1+10	R134a
					6070		-1+10	R12+R22+R502
					6125	-30+140	-1+10	R22+R134a
			6171		-1+10	R134a		
			6186		-1+10	R22+R134a		
			6685		-1+10	R134a+R404A		
			6702	-30+140	-1+10	R134a+R404A		
			7074		-1+10	R22+R134a+R404A		
			7076	-30+140	-1+10	R22+R134a+R404A		
			7126	-30+140	-1+10	R290+R600A		
			7216		-1+10	R134a+R404A+R507+R407C		
			7272		-1+10	R22+R134a+R407C		
			7290		-1+10	R23		
			7345		-1+10	R134a+R404A+R22+R407C		
			7366		-1+10	R407Cvap/liq		
			7496		-1+10	R507+R407Cvap/liq		
			7540		-1+10	R134a+R22+R407Cvap/liq		
			7552		-1+10	R134a+R22+R404A+R507		
			8006		-1+20	R410A		

Version	Outlet	Fitting	Reference		Pressure		Refrigerant	
			Case	Dial	psi	bar		
Oil filled	Vertical	1/4" SAE	MA0501V14S					
		1/8" NPT	MA0501V18B					
	Rear	1/4" SAE	MA0501A14S					
		1/8" NPT	MA0501A18B					
					0010		0+10	
					6355		0+16	
			0030		0+30			
			2055		-1+45			
			2056		-1+50			

How to read the tables? The complete designation of a pressure gauge comprises the reference of the casing, followed by the reference of the dial. E.g.: Pressure gauge diameter 60mm aluminium, oil filled, rear outlet, 1/4"SAE, -1+10bar / R134a+R404A+R407F, Case: MA1001A14S; Dial: 2027; Reference: MA1001A14S-2027

Blondelle Pressure Gauge, Ø60, Aluminium, HP



- Class 1
- 'A Lame Acier' unique bellow mechanism, the highest durability and accuracy
- All combinations of refrigerants possible
- Each gauge calibrated individually
- Aluminium case

- Admissible overload: 200%
- Possibility to adjust the needle
- Dry or oil filled
- Outlet: vertical or rear
- Fitting: 1/4" SAE or 1/8" NPT

High Pressure			Reference		Pressure		Refrigerants
Version	Outlet	Fitting	Case	Dial	psi	bar	
Dry	Vertical	1/4" SAE	MA0601V14S		-30+650		
	Rear	1/8" NPT	MA0601V18B				
Oil filled	Vertical	1/4" SAE	MA0601A14S				
		1/8" NPT	MA0601A18B				
	Rear	1/4" SAE	MA1001V14S				
		1/8" NPT	MA1001V18B				
	Rear	1/4" SAE	MA1001A14S				
		1/8" NPT	MA1001A18B				
		1002					
		1004					
		1006					
		1018					
		1024					
		1029					
		1032					
		1036					
		1038					
		1124					
		1138					
		1144					
1228							
2004							
2006							
2010							
2012							
2014							
2016							
2020							
2026							
2028							
2030							
2032							
2034							
2036							
2038							
2040							
2042							
2044							
2046							
2050							
2052							
2054							
2058							
2060							
2062							
2064							
2066							
2068							
2072							
2074							
2076							
2078							
2080							
2084							
2086							
2090							
2092							
2096							
2098							
							R507+R404A+R407Cvap/liq
							R404A+R407Cvap/liq+R134a
							R134a+R407Cvap/liq
							R410A
							R410A+R22+R134a+R407C
							R744
							R407Cvap/liq+R410A
							R134a+R404A+R410A+R22
							R407Cvap/liq+R410A+R22
							R134a+R404A+R407C+R410A
							R417Avap/liq+R422Dvap/liq
							R290+R600a
							R422D
							R134a+R404A+R507
							R508B
							R22+R507+R407Fvap
							R22+R407Cvap/liq
							R407Avap/liq+R407Fvap/liq
							R32+R410A
							R134a+R507+R407F
							R134a+R404A+R407C+R407F
							R134a+R404A+R407F
							R449A
							R427
							R448A+R449A
							R32+R410A+R134a+R407C
							R452a+R404A+R134a
							R134a+R404A+R450A+R407F
							R448A+R449A+R407F
							R1234yf+R1234ze+R134a
							R32+R410A+R407C
							R452A+R513A
							R32
							R449A+R450A+R452A+R513A
							R448A+R449A+R450A+R452A
							R290
							R404A+R407F+R448A
							R448A+R449A+R452A+R404A
							R134A+R404A+R449A+R507A
							R442A+R452A
							R134A+R513a
							R134a+R404A+R448A+R452A
							R134a+R448A+R452A+R455A
							R454C
							R134a+R513A+R410A+R448A
							R407C+R449A+R407F+R134a
							R515B+R1234yf+R1234ze+R134a
							R134a+R450A+R513A
							R290
							R455Avap/liq
							R1234yf+R1234ze+R134a+R513A

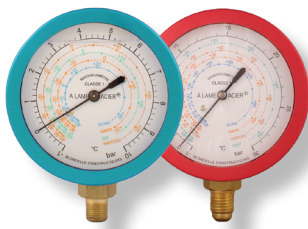


High Pressure			Reference		Pressure		Refrigerants	
Version	Outlet	Fitting	Case	Dial	psi	bar		
Dry	Vertical	1/4" SAE	MA0601V14S					
		1/8" NPT	MA0601V18B					
Oil filled	Rear	1/4" SAE	MA0601A14S					
		1/8" NPT	MA0601A18B					
	Vertical	1/4" SAE	MA1001V14S					
		1/8" NPT	MA1001V18B					
	Rear	1/4" SAE	MA1001A14S					
		1/8" NPT	MA1001A18B					
					2100		-1+30	R513A+R134a+R1234yf
					2102		-1+30	R454C+R449A
					5993	-30+400	-1+30	R12+R22+R502
					6061	-30+400	-1+30	R134a
				6071		-1+30	R12+R22+R502	
				6126	-30+400	-1+30	R22+R134a	
				6175		-1+30	R134a	
				6188		-1+30	R22+R134a	
				6686		-1+30	R134a+R404A	
				6703	-30+400	-1+30	R134a+R404A	
				7075		-1+30	R22+R134a+R404A	
				7077	-30+400	-1+30	R22+R134a+R404A	
				7127	-30+400	-1+30	R290+R600A	
				7217		-1+30	R134a+R404A+R507+R407C	
				7273		-1+30	R22+R134a+R407C	
				7291		-1+30	R23	
				7346		-1+30	R134a+R404A+R22+R407C	
				7367		-1+30	R407Cvap/liq	
				7497		-1+30	R507+R407Cvap/liq	
				7541		-1+30	R134a+R22+R407Cvap/liq	
				7553		-1+30	R134a+R22+R404A+R507	
				8007		-1+45	R410A	

Version	Outlet	Fitting	Reference		Pressure		Refrigerant	
			Case	Dial	psi	bar		
Oil filled	Vertical	1/4" SAE	MA0501V14S					
		1/8" NPT	MA0501V18B					
	Rear	1/4" SAE	MA0501A14S					
		1/8" NPT	MA0501A18B					
					0010		0+10	
					6355		0+16	
				0030		0+30		
				2055		-1+45		
				2056		-1+50		

How to read the tables? The complete designation of a pressure gauge comprises the reference of the casing, followed by the reference of the dial. E.g.: Pressure gauge diameter 60mm aluminium, oil filled, rear outlet, 1/4"SAE, -1+10bar / R134a+R404A+R407F, Case: MA1001A14S; Dial: 2027; Reference: MA1001A14S-2027

Blondelle Pressure Gauge, Ø 60, Composite, LP



- Class 1
- 'A Lame Acier' unique bellow mechanism, the highest durability and accuracy
- All combinations of refrigerants possible
- Each gauge calibrated individually
- high quality composite casing

- Admissible overload: 200%
- Possibility to adjust the needle
- Dry or oil filled
- Outlet: vertical or rear
- Fitting: 1/4" SAE or 1/8" NPT

Low Pressure			Reference		Pressure		Refrigerants			
Version	Outlet	Fitting	Case	Dial	psi	bar				
Dry	Vertical	1/4" SAE	MA0602V14S							
		1/8" NPT	MA0602V18B							
Oil filled	Rear	1/4" SAE	MA0602A14S							
		1/8" NPT	MA0602A18B							
Oil filled	Vertical	1/4" SAE	MA1002V14S							
		1/8" NPT	MA1002V18B							
Oil filled	Rear	1/4" SAE	MA1002A14S							
		1/8" NPT	MA1002A18B							
								1001	-1+10	R507+R404A+R407Cvap/liq
								1003	-1+10	R404A+R407Cvap/liq+R134a
								1005	-1+10	R134a+R407Cvap/liq
								1015	-1+30	R744
								1017	-1+20	R410A
								1023	-1+20	R410A+R22+R134a+R407C
								1031	-1+20	R407Cvap/liq+R410A
								1035	-1+20	R134a+R404A+R410A+R22
								1037	-1+20	R407Cvap/liq+R410A+R22
								1123	-1+20	R134a+R404A+R407C+R410A
								1137	-1+10	R417Avap/liq+R422Dvap/liq
								1143	-1+10	R290+R600a
				1227	-1+10	R422D				
				2003	-1+10	R134a+R404A+R507				
				2005	-1+10	R508B				
				2009	-1+10	R22+R507+R407Fvap				
				2011	-1+10	R22+R407Cvap/liq				
				2013	-1+10	R407Avap/liq+R407Fvap/liq				
				2015	-1+20	R32+R410A				
				2019	-1+10	R134a+R507+R407F				
				2025	-1+10	R134a+R404A+R407C+R407F				
				2027	-1+10	R134a+R404A+R407F				
				2029	-1+10	R449A				
				2031	-1+10	R427				
				2033	-1+10	R448A+R449A				
				2035	-1+20	R32+R410A+R134a+R407C				
				2037	-1+10	R452a+R404A+R134a				
				2039	-1+10	R134a+R404A+R450A+R407F				
				2041	-1+10	R448A+R449A+R407F				
				2043	-1+10	R1234yf+R1234ze+R134a				
				2045	-1+20	R32+R410A+R407C				
				2049	-1+10	R452A+R513A				
				2051	-1+20	R32				
				2053	-1+10	R449A+R450A+R452A+R513A				
				2057	-1+10	R448A+R449A+R450A+R452A				
				2059	-1+20	R290				
				2061	-1+10	R404A+R407F+R448A				
				2063	-1+10	R448A+R449A+R452A+R404A				
				2065	-1+10	R134a+R404A+R449A+R507A				
				2067	-1+10	R442A+R452A				
				2069	-1+10	R407Cvap/liq				
				2071	-1+10	R134A+R513a				
				2073	-1+10	R134a+R404A+R448A+R452A				
				2075	-1+10	R134a+R448A+R452A+R455A				
				2077	-1+10	R454C				
				2079	-1+20	R134a+R513A+R410A+R448A				
				2081	-1+20	R407Cvap/liq				
				2083	-1+10	R407C+R449A+R407F+R134a				
				2085	-1+10	R515B+R1234yf+R1234ze+R134a				
				2089	-1+10	R134a+R450A+R513A				
				2095	-1+10	R455Avap/liq				
				2097	-1+10	R1234yf+R1234ze+R134a+R513A				

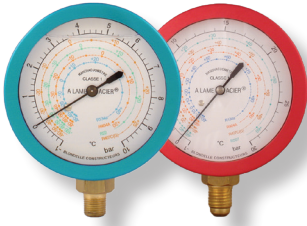


Low Pressure			Reference		Pressure		Refrigerants	
Version	Outlet	Fitting	Case	Dial	psi	bar		
Dry	Vertical	1/4" SAE	MA0602V14S					
		1/8" NPT	MA0602V18B					
Oil filled	Rear	1/4" SAE	MA0602A14S					
		1/8" NPT	MA0602A18B					
	Vertical	1/4" SAE	MA1002V14S					
		1/8" NPT	MA1002V18B					
	Rear	1/4" SAE	MA1002A14S					
		1/8" NPT	MA1002A18B					
					2099		-1+10	R513A+R134a+R1234yf
					2101		-1+10	R454C+R449A
					5992	-30+140	-1+10	R12+R22+R502
					6060	-30+140	-1+10	R134a
			6070		-1+10	R12+R22+R502		
			6125	-30+140	-1+10	R22+R134a		
			6171		-1+10	R134a		
			6186		-1+10	R22+R134a		
			6685		-1+10	R134a+R404A		
			6702	-30+140	-1+10	R134a+R404A		
			7074		-1+10	R22+R134a+R404A		
			7076	-30+140	-1+10	R22+R134a+R404A		
			7126	-30+140	-1+10	R290+R600A		
			7216		-1+10	R134a+R404A+R507+R407C		
			7272		-1+10	R22+R134a+R407C		
			7290		-1+10	R23		
			7345		-1+10	R134a+R404A+R22+R407C		
			7366		-1+10	R407Cvap/liq		
			7496		-1+10	R507+R407Cvap/liq		
			7540		-1+10	R134a+R22+R407Cvap/liq		
			7552		-1+10	R134a+R22+R404A+R507		
			8006		-1+20	R410A		

Version	Outlet	Fitting	Reference		Pressure		Refrigerant	
			Case	Dial	psi	bar		
Oil filled	Vertical	1/4" SAE	MA0502V14S					
		1/8" NPT	MA0502V18B					
	Rear	1/4" SAE	MA0502A14S					
		1/8" NPT	MA0502A18B					
					0010		0+10	
					6355		0+16	
			0030		0+30			
			2055		-1+45			
			2056		-1+50			

How to read the tables? The complete designation of a pressure gauge comprises the reference of the casing, followed by the reference of the dial. E.g.: Pressure gauge diameter 60mm composite, oil filled, rear outlet, 1/4"SAE, -1+10bar / R134a+R404A+R407F, Case: MA1002A14S; Dial: 2027; Reference: MA1002A14S-2027

Blondelle Pressure Gauge, Ø 60, Composite, HP



- Class 1
- 'A Lame Acier' unique bellow mechanism, the highest durability and accuracy
- All combinations of refrigerants possible
- Each gauge calibrated individually
- high quality composite casing

- Admissible overload: 200%
- Possibility to adjust the needle
- Dry or oil filled
- Outlet: vertical or rear
- Fitting: 1/4" SAE or 1/8" NPT

High Pressure			Reference		Pressure		Refrigerants		
Version	Outlet	Fitting	Case	Dial	psi	bar			
Dry	Vertical	1/4" SAE	MA0602V14S						
	Rear	1/8" NPT	MA0602V18B						
Oil filled	Vertical	1/4" SAE	MA0602A14S						
	Rear	1/8" NPT	MA0602A18B						
		1/4" SAE	MA1002V14S						
		1/8" NPT	MA1002V18B						
		1/4" SAE	MA1002A14S						
		1/8" NPT	MA1002A18B						
			1002					-1+30	R507+R404A+R407Cvap/liq
			1004					-1+30	R404A+R407Cvap/liq+R134a
			1006					-1+30	R134a+R407Cvap/liq
			1018					-1+45	R410A
			1024					-1+45	R410A+R22+R134a+R407C
			1029					-1+50	R744
			1032					-1+45	R407Cvap/liq+R410A
			1036					-1+45	R134a+R404A+R410A+R22
			1038					-1+45	R407Cvap/liq+R410A+R22
			1124					-1+45	R134a+R404A+R407C+R410A
			1138					-1+30	R417Avap/liq+R422Dvap/liq
			1144					-1+30	R290+R600a
			1228	-1+30	R422D				
			2004	-1+30	R134a+R404A+R507				
			2006	-1+30	R508B				
			2010	-1+30	R22+R507+R407Fvap				
			2012	-1+30	R22+R407Cvap/liq				
			2014	-1+30	R407Avap/liq+R407Fvap/liq				
			2016	-1+45	R32+R410A				
			2020	-1+30	R134a+R507+R407F				
			2026	-1+30	R134a+R404A+R407C+R407F				
			2028	-1+30	R134a+R404A+R407F				
			2030	-1+30	R449A				
			2032	-1+30	R427				
			2034	-1+30	R448A+R449A				
			2036	-1+45	R32+R410A+R134a+R407C				
			2038	-1+30	R452a+R404A+R134a				
			2040	-1+30	R134a+R404A+R450A+R407F				
			2042	-1+30	R448A+R449A+R407F				
			2044	-1+30	R1234yf+R1234ze+R134a				
			2046	-1+45	R32+R410A+R407C				
			2050	-1+30	R452A+R513A				
			2052	-1+45	R32				
			2054	-1+30	R449A+R450A+R452A+R513A				
			2058	-1+30	R448A+R449A+R450A+R452A				
			2060	-1+30	R290				
			2062	-1+30	R404A+R407F+R448A				
			2064	-1+30	R448A+R449A+R452A+R404A				
			2066	-1+30	R134A+R404A+R449A+R507A				
			2068	-1+30	R442A+R452A				
			2072	-1+30	R134A+R513a				
			2074	-1+30	R134a+R404A+R448A+R452A				
			2076	-1+30	R134a+R448A+R452A+R455A				
			2078	-1+30	R454C				
			2080	-1+45	R134a+R513A+R410A+R448A				
			2084	-1+30	R407C+R449A+R407F+R134a				
			2086	-1+30	R515B+R1234yf+R1234ze+R134a				
			2090	-1+30	R134a+R450A+R513A				
			2092	-1+45	R290				
			2096	-1+30	R455Avap/liq				
			2098	-1+30	R1234yf+R1234ze+R134a+R513A				



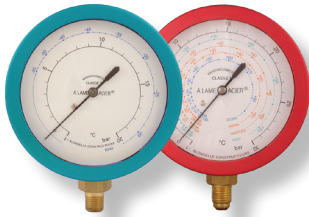
High Pressure			Reference		Pressure		Refrigerants	
Version	Outlet	Fitting	Case	Dial	psi	bar		
Dry	Vertical	1/4" SAE	MA0602V14S					
		1/8" NPT	MA0602V18B					
Oil filled	Rear	1/4" SAE	MA0602A14S					
		1/8" NPT	MA0602A18B					
	Vertical	1/4" SAE	MA1002V14S					
		1/8" NPT	MA1002V18B					
	Rear	1/4" SAE	MA1002A14S					
		1/8" NPT	MA1002A18B					
					2100		-1+30	R513A+R134a+R1234yf
					2102		-1+30	R454C+R449A
					5993	-30+400	-1+30	R12+R22+R502
					6061	-30+400	-1+30	R134a
				6071		-1+30	R12+R22+R502	
				6126	-30+400	-1+30	R22+R134a	
				6175		-1+30	R134a	
				6188		-1+30	R22+R134a	
				6686		-1+30	R134a+R404A	
				6703	-30+400	-1+30	R134a+R404A	
				7075		-1+30	R22+R134a+R404A	
				7077	-30+400	-1+30	R22+R134a+R404A	
				7127	-30+400	-1+30	R290+R600A	
				7217		-1+30	R134a+R404A+R507+R407C	
				7273		-1+30	R22+R134a+R407C	
				7291		-1+30	R23	
				7346		-1+30	R134a+R404A+R22+R407C	
				7367		-1+30	R407Cvap/liq	
				7497		-1+30	R507+R407Cvap/liq	
				7541		-1+30	R134a+R22+R407Cvap/liq	
				7553		-1+30	R134a+R22+R404A+R507	
				8007		-1+45	R410A	

Version	Outlet	Fitting	Reference		Pressure		Refrigerant	
			Case	Dial	psi	bar		
Oil filled	Vertical	1/4" SAE	MA0502V14S					
		1/8" NPT	MA0502V18B					
	Rear	1/4" SAE	MA0502A14S					
		1/8" NPT	MA0502A18B					
					0010		0+10	
					6355		0+16	
				0030		0+30		
				2055		-1+45		
				2056		-1+50		

How to read the tables? The complete designation of a pressure gauge comprises the reference of the casing, followed by the reference of the dial. E.g.: Pressure gauge diameter 60mm composite, oil filled, rear outlet, 1/4"SAE, -1+10bar / R134a+R404A+R407F, Case: MA1002A14S; Dial: 2027; Reference: MA1002A14S-2027



Blondelle Pressure Gauge, Ø 80, Composite, LP p.1/2



- Class 1
- 'A Lame Acier' unique bellow mechanism, the highest durability and accuracy
- All combinations of refrigerants possible
- Each gauge calibrated individually, Possibility to adjust the needle

- High quality composite casing
- Admissible overload: 200%
- Dry , oil filled or pulse-free
- Outlet: vertical or rear, fitting: 1/4" SAE or 1/8" NPT

Low Pressure Version	Outlet	Fitting	Reference Case	Dial	Pressure		Refrigerants
					psi	bar	
Dry	Vertical	1/4" SAE	MA0603V14S				
		1/4" GAZ	MA0603V14G				
		1/8" NPT	MA0603V18B				
	Rear	1/4" SAE	MA0603A14S				
		1/4" GAZ	MA0603A14G				
		1/8" NPT	MA0603A18B				
Oil filled	Vertical	1/4" SAE	MA1003V14S				
		1/4" GAZ	MA1003V14G				
		1/8" NPT	MA1003V18B				
	Rear	1/4" SAE	MA1003A14S				
		1/4" GAZ	MA1003A14G				
		1/8" NPT	MA1003A18B				
Pulse-free	Vertical	1/4" SAE	MA0901V14S				
		1/4" GAZ	MA0901V14G				
		1/8" NPT	MA0901V18B				
	Rear	1/4" SAE	MA0901A14S				
		1/4" GAZ	MA0901A14G				
		1/8" NPT	MA0901A18B				
				1051			
				1055			
				1057	-30+400		
				1065		-1+30	R744
				1067		-1+10	R1270
				1073		-1+20	R410A+R22+R134a+R407C
				1085		-1+20	R134a+R404A+R410A+R22
				1087		-1+20	R407Cvap/liq+R410A+R22
				1099		-1+80	R744 (Transcritical)
				1155		-1+100	R744 (Transcritical)
				1173		-1+20	R410A+R407C+R404A+R134a
				1179		-1+10	R422D+R422A+R417A
				1193		-1+10	R290+R600a
				1203		-1+20	R32+R410A+R134a
				3001		-1+20	R422D
				3003		-1+10	R134a+R404A+R407F
				3005		-1+10	R22+R290+R600A
				3009	-30+1200	-1+80	R744 (Transcritical)
				3012		-1+10	R422D
				3013		-1+20	R32
				3023		-1+10	R404A+R407A+R407F
				3025		-1+10	R1234yf+R134a+R1234ze
				3027		-1+20	R134a+R410A+R407C+R407F
				3029		-1+10	R134a+R404A+R407C+R407F
				3031		-1+20	R407A
				3033		-1+10	R404A+R407A+R407F+R449A
				3037		-1+20	R449A
				3039		-1+10	R434a
				3041		-1+10	R134a+R404A+R407A+R407F
				3043		-1+20	R32+R410A
				3045		-1+10	R404A+R508B
				3049		-1+10	R1234yf+R1234ze
				3053		-1+10	R290+R134a+R407C+R404A
				3055		-1+20	R448A+R449A
				3057		-1+10	R134a+R404A+R22+R449A
				3059		-1+20	R32+R410A+R134a+R407C
				3061		-1+20	R452a
				3063		-1+10	R134a+R404A+R407F+R449A
				3067		-1+10	R404A+R134a+R449A+R407C
				3069		-1+10	R448A+R449A+R407F
				3071		-1+10	R134a+R404A+R407F+R407C
				3073		-1+10	R452a+R404A+R134a
				3077		-1+20	R32+R410A+R407C+R404A
				3079		-1+20	R32+R410A+R407C
				3081		-1+10	R236fa+R227ea
				3083	-30+435	-1+30	R744
				3085		-1+20	R1234yf+R1234ze+R410A+R134a
				3087		-1+20	R448A+R449A+R450A+R407F
				3089		-1+20	R134a+R404A+R507A+R407C
				3091		-1+10	R448A+R449A+R450A+R407F
				3093		-1+10	R448A+R449A+R450A+R452A
				3095		-1+10	R449Avap/liq+R448Avap/liq



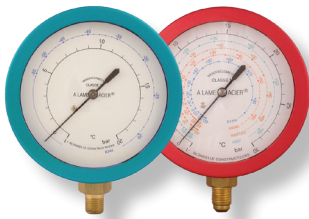
Low Pressure Version	Outlet	Fitting	Reference Case		Pressure		Refrigerants
			Case	Dial	psi	bar	
Dry	Vertical	1/4" SAE	MA0603V14S				
		1/4" GAZ	MA0603V14G				
		1/8" NPT	MA0603V18B				
Oil filled	Rear	1/4" SAE	MA0603A14S				
		1/4" GAZ	MA0603A14G				
		1/8" NPT	MA0603A18B				
Pulse-free	Vertical	1/4" SAE	MA1003V14S				
		1/4" GAZ	MA1003V14G				
		1/8" NPT	MA1003V18B				
	Rear	1/4" SAE	MA1003A14S				
		1/4" GAZ	MA1003A14G				
		1/8" NPT	MA1003A18B				
	Vertical	1/4" SAE	MA0901V14S				
		1/4" GAZ	MA0901V14G				
		1/8" NPT	MA0901V18B				
	Rear	1/4" SAE	MA0901A14S				
		1/4" GAZ	MA0901A14G				
		1/8" NPT	MA0901A18B				
				3097		-1+10	R404A+R449A+R452A+R134a
				3099		-1+10	R449A+R452+R513+1234yf
				3101		-1+10	R449A+R450A+R452A+R513A
				3103		-1+20	R449Avap/liq+R448Avap/liq
				3105		-1+20	R407A+R449A+R410A
				3107		-1+10	R448A+R449A+R452A+R455A
				3109		-1+20	R410A+R134a+R407C
				3111		-1+20	R32+R410A+R407C
				3113		-1+10	R404A+R448A+R449A+R134a
				3115		-1+20	R449A+R450A+R452A+R513A
				3117		-1+10	R1234yf+R134a+R407C+R513A
				3119		-1+20	R404A+R452A+R134a+R410A
				3121	-30+290	-1+20	R32+R290+R600a
				3123		-1+20	R410A+R404A+R448A+R134a
				3125		-1+10	R442A+R134a+R404A
				3127		-1+10	R449A
				3129	-30+140	-1+10	R1234yf+R134a+R513A
				3131		-1+10	R134a+R404A+R449A+R448A+R452A
				3133		-1+10	R1234yf+R32+R407C+R134a
				3137	-30+140	-1+10	R22+R290+R600A
				3139		-1+20	R449A+R452A+R32+R134a
				3141		-1+10	R404A+R407F+R448A+R449A
				3143		-1+20	R449A+R410A+R32+R134a
				3145		-1+10	R1234yf+R1234ze+R134a+R513A
				3147		-1+10	R14+R23
				3149		-1+10	R134a+R448A+R452A+R455A
				3151		-1+10	R134a+R404A+R448A+R452A
				3153	-30+140	-1+10	R1234yf+R1234ze+R134a
				3155		-1+10	R290+R22+R134a
				3157		-1+10	R134a+R404A+R452A+R453A
				3159		-1+10	R134a+R450A+R452A+R513A
				3161		-1+10	R448A+R449A+R450A+R513A
				3165		-1+10	R245fa
				3167		-1+20	R410A+R454B
				3169		-1+20	R410A+R404A+R449A+R134a
				3173		-1+20	R449A+R455A+R32+R410A
				3175		-1+10	R449A+R452A+R513A+R404A
				3177		-1+20	R32+R134a+R407C+R404A
				3179		-1+10	R513A
				3181		-1+10	R454C
				3183		-1+10	R290+R454C+R455A+R1234yf
				3185		-1+10	R404A+R455Avap/liq+R454Cvap/liq
				3187		-1+10	R1234yf+R134a+R450A+R513A
				3189		-1+10	R1233zd(E)
				3191		-1+10	R134a+R407C+R513A
				3193		-1+10	R134a+R448A+R513A+R407C
				3195		-1+10	R452a
				3197		-1+10	R454A+R454B+R454C+R404A
				3199		-1+10	R1234yf+R1234ze+R454C+R455A
				3201		-1+10	R32+R404A+R410A+R134a
				3203		-1+10	R452B
				3205		-1+10	R404A+R449A+R513A+R134a
				3207		-1+10	R404A+R448A+R449A+R455A
				3209		-1+10	R422Dvap/liq+R22
				3211		-1+10	R1234yf+R452A+R134a
				3213		-1+10	R515B
				3215		-1+20	R404A+R449A+R452A+R134a
				3217		-1+10	R515B+R513B
				3219		-1+10	R515B+R1234ze
				3221		-1+20	R290+R32+R410A+R454C

How to read the tables? The complete designation of a pressure gauge comprises the reference of the casing, followed by the reference of the dial. E.g.: Pressure gauge diameter 80mm composite, oil-filled, vertical outlet, 1/8"NPT, -1+45bar / R407C+R410A+R22: Case: MA1003V18B; Dial: 1088; Reference: MA1003V18B-1088



Blondelle Pressure Gauge, Ø 80, Composite, LP

p.2/2



- Class 1
- 'A Lame Acier' unique bellow mechanism, the highest durability and accuracy
- All combinations of refrigerants possible
- Each gauge calibrated individually, Possibility to adjust the needle

- High quality composite casing
- Admissible overload: 200%
- Dry , oil filled or pulse-free
- Outlet: vertical or rear, fitting: 1/4" SAE or 1/8" NPT

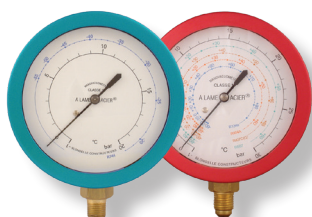
Low Pressure Version	Outlet	Fitting	Reference Case	Dial	Pressure		Refrigerants	
					psi	bar		
Dry	Vertical	1/4" SAE	MA0603V14S					
		1/4" GAZ	MA0603V14G					
		1/8" NPT	MA0603V18B					
	Rear	1/4" SAE	MA0603A14S					
		1/4" GAZ	MA0603A14G					
		1/8" NPT	MA0603A18B					
Oil filled	Vertical	1/4" SAE	MA1003V14S					
		1/4" GAZ	MA1003V14G					
		1/8" NPT	MA1003V18B					
	Rear	1/4" SAE	MA1003A14S					
		1/4" GAZ	MA1003A14G					
		1/8" NPT	MA1003A18B					
Pulse-free	Vertical	1/4" SAE	MA0901V14S					
		1/4" GAZ	MA0901V14G					
		1/8" NPT	MA0901V18B					
		Rear	1/4" SAE	MA0901A14S				
			1/4" GAZ	MA0901A14G				
			1/8" NPT	MA0901A18B				
					3225	-1+10	R290+R600+R600a	
					3227	-1+20	R32+R407C+R410A+R290	
					3229	-1+10	R454C+R455A+R471A+R1234yf	
					3231	-1+10	R450A+R513A+R448A+R449A+R452A	
					3233	-1+20	R290+R600a+R1270	
					3235	-30+290	-1+20 R410A+R32+R454B	
				3238	-1+20	R454C+R455A		
				3239	-1+10	R515B+R1234yf+R1234ze+R134a		
				3241	-1+10	R404A+R513A+R1234yf+R134a		
				3243	-1+10	R448A+R449A+R454A+R455A		
				3245	-1+10	R1234ze+R245fa+R1233zd(e)		
				3247	-1+10	R290+R452A+R455A		
				4090	-1+10	R409A		
				4092	-1+10	R134a+R22+R409Avap/liq		
				5941	-30+140	-1+10 R12+R22+R502		
				6072	-1+10	R12+R22+R502		
				6127	-30+140	-1+10 R22+R134a		
				6172	-1+10	R134a		
				6187	-1+10	R22+R134a		
				6607	-30+140	-1+10 R134a		
				6630	-1+10	R134a+R404A		
				6704	-30+140	-1+10 R134a+R404A		
				7130	-30+140	-1+10 R290+R600A		
				7279	-1+10	R23		
				7309	-1+10	R134a+R404A+R507+R407C		
				7312	-1+10	R134a+R22+R404A		
				7314	-30+140	-1+10 R134a+R22+R404A		
				7341	-1+10	R134a+R404A+R22+R407C		
				7524	-1+20	R410A		
				7526	-1+10	R134a+R404A+R407Cvap/liq		
				7528	-1+5	R600A+Care 30vap/liq		
				7530	-1+10	R290+Care 50vap/liq		
				7542	-1+10	R134a+R22+R407Cvap/liq		
				7554	-1+10	R134a+R22+R404A+R507		
				7734	-1+10	R22+R407Cvap/liq		
				7805	-30+145	R22+R134a+R404A (°F)		
				8101	-30+145	R12+R22+R502 (°F)		
				8137	-30+400	R410A (°F)		
				8264	-1+10	R134a+R407Cvap/liq		



Version	Outlet	Fitting	Reference		Pressure		Refrigerants
			Case	Dial	psi	bar	
Oil filled	Vertical	1/4" SAE	MA0503V14S				
		1/8" NPT	MA0503V18B				
	Rear	1/4" SAE	MA0503A14S				
		1/8" NPT	MA0503A18B				
				3237			-1+5
				6364			0+16
				8010			0+10
				3171	-30+290		-1+20
			8030			0+30	
			3136	-30+650		-1+45	
			3135			-1+50	
			3163			-1+60	

How to read the tables? The complete designation of a pressure gauge comprises the reference of the casing, followed by the reference of the dial. E.g.: Pressure gauge diameter 80mm composite, oil-filled, vertical outlet, 1/8"NPT, -1+45bar / R407C+R410A+R22: Case: MA1003V18B; Dial: 1088; Reference: MA1003V18B-1088

Blondelle Pressure Gauge, Ø 80, Composite, HP p.1/2



- Class 1
- 'A Lame Acier' unique bellow mechanism, the highest durability and accuracy
- All combinations of refrigerants possible
- Each gauge calibrated individually, Possibility to adjust the needle

- High quality composite casing
- Admissible overload: 200%
- Dry , oil filled or pulse-free
- Outlet: vertical or rear, fitting: 1/4" SAE or 1/8" NPT

High Pressure			Reference		Pressure		Refrigerants
Version	Outlet	Fitting	Case	Dial	psi	bar	
Dry	Vertical	1/4" SAE	MA0603V14S				
		1/4" GAZ	MA0603V14G				
		1/8" NPT	MA0603V18B				
	Rear	1/4" SAE	MA0603A14S				
		1/4" GAZ	MA0603A14G				
		1/8" NPT	MA0603A18B				
Oil filled	Vertical	1/4" SAE	MA1003V14S				
		1/4" GAZ	MA1003V14G				
		1/8" NPT	MA1003V18B				
	Rear	1/4" SAE	MA1003A14S				
		1/4" GAZ	MA1003A14G				
		1/8" NPT	MA1003A18B				
Pulse-free	Vertical	1/4" SAE	MA0901V14S				
		1/4" GAZ	MA0901V14G				
		1/8" NPT	MA0901V18B				
	Rear	1/4" SAE	MA0901A14S				
		1/4" GAZ	MA0901A14G				
		1/8" NPT	MA0901A18B				
				1052		-1+30	R507+R404A+R407Cvap/liq
				1056		-1+30	R22+R417Cvap/liq
				1058	-30+800		R22+R410A (°F)
				1068		-1+30	R1270
				1072		-1+50	R744
				1074		-1+45	R410A+R22+R134a+R407C
				1086		-1+45	R134a+R404A+R410A+R22
				1088		-1+45	R407Cvap/liq+R410A+R22
				1100		-1+160	R744 (Transcritical)
				1174		-1+45	R410A+R407C+R404A+R134a
				1180		-1+30	R422D+R422A+R417A
				1194		-1+30	R290+R600a
				1204		-1+45	R32+R410A+R134a
				1214		-1+60	R774
				3002		-1+30	R422D
				3004		-1+30	R134a+R404A+R407F
				3006		-1+30	R22+R290+R600A
				3010	-30+2300	-1+160	R744 (Transcritical)
				3014		-1+45	R32
				3024		-1+30	R404A+R407A+R407F
				3026		-1+30	R1234yf+R134a+R1234ze
				3028		-1+45	R134a+R410A+R407C+R407F
				3030		-1+30	R134a+R404A+R407C+R407F
				3032		-1+30	R407A
				3034		-1+30	R404A+R407A+R407F+R449A
				3035		-1+200	R744 (Transcritical)
				3038		-1+30	R449A
				3040		-1+30	R434a
				3042		-1+30	R134a+R404A+R407A+R407F
				3044		-1+45	R32+R410A
				3046		-1+30	R404A+R508B
				3050		-1+30	R1234yf+R1234ze
				3054		-1+30	R290+R134a+R407C+R404A
				3056		-1+30	R448A+R449A
				3058		-1+30	R134a+R404A+R22+R449A
				3060		-1+45	R32+R410A+R134a+R407C
				3062		-1+30	R452a
				3064		-1+30	R134a+R404A+R407F+R449A
				3068		-1+30	R404A+R134a+R449A+R407C
				3070		-1+30	R448A+R449A+R407F
				3072		-1+30	R134a+R404A+R407F+R407C
				3074		-1+30	R452a+R404A+R134a
				3078		-1+45	R32+R410A+R407C+R404A
				3080		-1+45	R32+R410A+R407C
				3082		-1+30	R236fa+R227ea
				3084		-1+50	R744
				3086		-1+45	R1234yf+R1234ze+R410A+R134a
				3088		-1+45	R448A+R449A+R450A+R407F
				3090		-1+45	R134a+R404A+R507A+R407C
				3092		-1+30	R448A+R449A+R450A+R407F
				3094		-1+30	R448A+R449A+R450A+R452A
				3096		-1+30	R449Avap/liq+R448Avap/liq



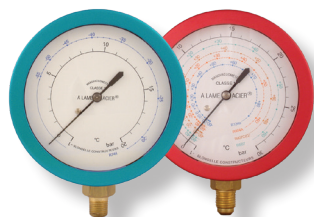
High Pressure Version	Outlet	Fitting	Reference		Pressure		Refrigerants
			Case	Dial	psi	bar	
Dry	Vertical	1/4" SAE	MA0603V14S				
		1/4" GAZ	MA0603V14G				
		1/8" NPT	MA0603V18B				
	Rear	1/4" SAE	MA0603A14S				
		1/4" GAZ	MA0603A14G				
		1/8" NPT	MA0603A18B				
Oil filled	Vertical	1/4" SAE	MA1003V14S				
		1/4" GAZ	MA1003V14G				
		1/8" NPT	MA1003V18B				
	Rear	1/4" SAE	MA1003A14S				
		1/4" GAZ	MA1003A14G				
		1/8" NPT	MA1003A18B				
Pulse-free	Vertical	1/4" SAE	MA0901V14S				
		1/4" GAZ	MA0901V14G				
		1/8" NPT	MA0901V18B				
	Rear	1/4" SAE	MA0901A14S				
		1/4" GAZ	MA0901A14G				
		1/8" NPT	MA0901A18B				
			3098		-1+30	R404A+R449A+R452A+R134a	
			3100		-1+30	R449A+R452+R513+1234yf	
			3102		-1+30	R449A+R450A+R452A+R513A	
			3104		-1+45	R449Avap/liq+R448Avap/liq	
			3106		-1+45	R407A+R449A+R410A	
			3108		-1+30	R448A+R449A+R452A+R455A	
			3110		-1+45	R410A+R134a+R407C	
			3112		-1+45	R32+R410A+R407C	
			3114		-1+30	R404A+R448A+R449A+R134a	
			3118		-1+30	R1234yf+R134a+R407C+R513A	
			3120		-1+45	R404A+R452A+R134a+R410A	
			3122	-30+650	-1+45	R32+R290+R600a	
			3124		-1+45	R410A+R404A+R448A+R134a	
			3126		-1+30	R442A+R134a+R404A	
			3130	-30+435	-1+30	R1234yf+R134a+R513A	
			3132		-1+30	R134a+R404A+R449A+R448A+R452A	
			3134		-1+30	R1234yf+R32+R407C+R134a	
			3138	-30+435	-1+30	R22+R290+R600A	
			3140		-1+45	R449A+R452A+R32+R134a	
			3142		-1+30	R404A+R407F+R448A+R449A	
			3144		-1+45	R449A+R410A+R32+R134a	
			3146		-1+30	R1234yf+R1234ze+R134a+R513A	
			3148		-1+30	R14+R23	
			3150		-1+30	R134a+R448A+R452A+R455A	
			3152		-1+30	R134a+R404A+R448A+R452A	
			3154	-30+435	-1+30	R1234yf+R1234ze+R134a	
			3156		-1+30	R290+R22+R134a	
			3158		-1+30	R134a+R404A+R452A+R453A	
			3160		-1+30	R134a+R450A+R452A+R513A	
			3162		-1+30	R448A+R449A+R450A+R513A	
			3164		-1+45	R134a	
			3166		-1+30	R245fa	
			3168		-1+45	R410A+R454B	
			3170		-1+45	R410A+R404A+R449A+R134a	
			3174		-1+45	R449A+R455A+R32+R410A	
			3176		-1+30	R449A+R452A+R513A+R404A	
			3178		-1+45	R32+R134a+R407C+R404A	
			3180		-1+30	R513A	
			3182		-1+30	R454C	
			3184		-1+30	R290+R454C+R455A+R1234yf	
			3186		-1+30	R404A+R455Avap/liq+R454Cvap/liq	
			3188		-1+30	R1234yf+R134a+R450A+R513A	
			3190		-1+30	R1233zd(E)	
			3192		-1+30	R134a+R407C+R513A	
			3194		-1+30	R134a+R448A+R513A+R407C	
			3198		-1+30	R454A+R454B+R454C+R404A	
			3200		-1+30	R1234yf+R1234ze+R454C+R455A	
			3202		-1+30	R32+R404A+R410A+R134a	
			3204		-1+30	R452B	
			3206		-1+30	R404A+R449A+R513A+R134a	
			3208		-1+30	R404A+R448A+R449A+R455A	
			3210		-1+30	R422Dvap/liq+R22	
			3212		-1+30	R1234yf+R452A+R134a	
			3214		-1+30	R515B	
			3216		-1+45	R1233zd	
			3218		-1+30	R515B+R513B	
			3220		-1+45	R515B+R1234ze	
			3222		-1+45	R290+R32+R410A+R454C	
			3226		-1+30	R290+R600+R600a	
			3228		-1+45	R32+R407C+R410A+R290	
			3230		-1+30	R454C+R455A+R471A+R1234yf	

How to read the tables? The complete designation of a pressure gauge comprises the reference of the casing, followed by the reference of the dial. E.g.: Pressure gauge diameter 80mm composite, oil-filled, vertical outlet, 1/8"NPT, -1+45bar / R407C+R410A+R22: Case: MA1003V18B; Dial: 1088; Reference: MA1003V18B-1088



Blondelle Pressure Gauge, Ø 80, Composite, HP

p.2/2



- Class 1
- 'A Lame Acier' unique bellow mechanism, the highest durability and accuracy
- All combinations of refrigerants possible
- Each gauge calibrated individually, Possibility to adjust the needle

- High quality composite casing
- Admissible overload: 200%
- Dry , oil filled or pulse-free
- Outlet: vertical or rear, fitting: 1/4" SAE or 1/8" NPT

High Pressure			Reference	Pressure		Refrigerants			
Version	Outlet	Fitting	Case	psi	bar				
Dry	Vertical	1/4" SAE	MA0603V14S						
		1/4" GAZ	MA0603V14G						
		1/8" NPT	MA0603V18B						
	Rear	1/4" SAE	MA0603A14S						
		1/4" GAZ	MA0603A14G						
		1/8" NPT	MA0603A18B						
Oil filled	Vertical	1/4" SAE	MA1003V14S						
		1/4" GAZ	MA1003V14G						
		1/8" NPT	MA1003V18B						
	Rear	1/4" SAE	MA1003A14S						
		1/4" GAZ	MA1003A14G						
		1/8" NPT	MA1003A18B						
Pulse-free	Vertical	1/4" SAE	MA0901V14S						
		1/4" GAZ	MA0901V14G						
		1/8" NPT	MA0901V18B						
	Rear	1/4" SAE	MA0901A14S						
		1/4" GAZ	MA0901A14G						
		1/8" NPT	MA0901A18B						
							3232	-1+30	R450A+R513A+R448A+R449A+R452A
							3234	-1+45	R290+R600a+R1270
							3236	-1+45	R410A+R32+R454B
							3240	-1+30	R515B+R1234yf+R1234ze+R134a
							3242	-1+30	R404A+R513A+R1234yf+R134a
							3244	-1+30	R448A+R449A+R454A+R455A
							3246	-1+30	R1234ze+R245fa+R1233zd(e)
							3248	-1+30	R290+R452A+R455A
							3250	-1+30	R454C
							4091	-1+30	R409Avap/liq
							4093	-1+30	R134a+R22+R409Avap/liq
							5942	-30+435	R12+R22+R502
				6073	-1+30	R12+R22+R502			
				6128	-30+435	R22+R134a			
				6176	-1+30	R134a			
				6189	-1+30	R22+R134a			
				6608	-30+435	R134a			
				6631	-1+30	R134a+R404A			
				6705	-30+435	R134a+R404A			
				7131	-30+435	R290+R600A			
				7280	-1+30	R23			
				7310	-1+30	R134a+R404A+R507+R407C			
				7313	-1+30	R134a+R22+R404A			
				7315	-30+435	R134a+R22+R404A			
				7342	-1+30	R134a+R404A+R22+R407C			
				7527	-1+30	R134a+R404A+R407Cvap/liq			
				7529	-1+16	R600A+Care30vap/liq			
				7531	-1+30	R290+Care50vap/liq			
				7543	-1+30	R134a+R22+R407Cvap/liq			
				7555	-1+30	R134a+R22+R404A+R507			
				7735	-1+30	R22+R407Cvap/liq			
				7806	-30+435	R22+R13a+R404A (°F)			
				7808	-1+45	R410A			
				8102	-30+435	R12+R22+R502 (°F)			
				8138	-30+800	R410A (°F)			
				8265	-1+30	R134a+R407Cvap/liq			

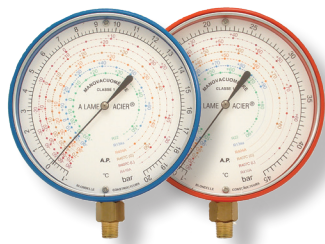


Version	Outlet	Fitting	Reference		Pressure		Refrigerants
			Case	Dial	psi	bar	
Oil filled	Vertical	1/4" SAE	MA0503V14S				
		1/8" NPT	MA0503V18B				
	Rear	1/4" SAE	MA0503A14S				
		1/8" NPT	MA0503A18B				
				3237			
				6364			-1+5
				8010			0+16
				3171	-30+290		0+10
			8030			-1+20	
			3136	-30+650		0+30	
			3135			-1+45	
			3163			-1+50	
						-1+60	

How to read the tables? The complete designation of a pressure gauge comprises the reference of the casing, followed by the reference of the dial. E.g.: Pressure gauge diameter 80mm composite, oil-filled, vertical outlet, 1/8"NPT, -1+45bar / R407C+R410A+R22: Case: MA1003V18B; Dial: 1088; Reference: MA1003V18B-1088

Blondelle Pressure Gauge, Ø 100, Aluminium, LP

Exceptional measurement and reading accuracy; up to 6 refrigerants on 1 dial.



- All combinations of refrigerants possible, up to 6 refrigerants on 1 dial.
- Class 1
- 'A Lame Acier' unique bellow mechanism, the highest durability and accuracy.
- Each gauge calibrated individually
- Aluminium case

- Admissible overload: 200%
- Possibility to adjust the needle
- Dry, oil filled or pulse-free
- Outlet: vertical or rear
- Fitting: 1/4" SAE or 1/8" NPT

Low Pressure			Reference		Pressure		Refrigerants
Version	Outlet	Fitting	Case	Dial	psi	bar	
Dry	Vertical	1/4" SAE	MA0605V14S				
		1/8" NPT	MA0605V18B				
	Rear	1/4" SAE	MA0605A14S				
		1/8" NPT	MA0605A18B				
Oil filled	Vertical	1/4" SAE	MA1005V14S				
		1/8" NPT	MA1005V18B				
	Rear	1/4" SAE	MA1005A14S				
		1/8" NPT	MA1005A18B				
Pulse-free	Vertical	1/4" SAE	MA0701V14S				
		1/8" NPT	MA0701V18B				
	Rear	1/4" SAE	MA0701A14S				
		1/8" NPT	MA0701A18B				
				1077		-1+20	R22+R134a+R404A+R407Cvap/liq+R410A
				1083		-1+10	R134a+R404A+R22+R407Cvap/liq
				1095		-1+10	R22+R404A
				1097		-1+6	R170
				1151		-1+30	R744 (Subcritical)
				1153		-1+20	R410A
				1177		-1+80	R744 (Transcritical)
				1184		-1+100	R744 (Transcritical)
				1185		-1+10	R134a+R507
				1189		-1+20	R410A+R407Cvap/liq+R404A+R134a+R507
				1191		-1+10	R227ea
				2622		-1+10	R12 + R22 + R502
				4001	-30+1200	-1+80	R744 (Transcritical)
				4003		-1+10	R134a+R22+R404A+R507
				4007		-1+10	R404A+R134a+R407C+R407F
				4011		-1+10	R134a+R404A+R407CvapR407Fvap
				4013		-1+10	R422Dvap/liq
				4017		-1+10	R407Avap/liq
				4019		-1+140	R744 (Transcritical)
				4021		-1+20	R434a
				4025		-1+10	R449Avap/liq
				4027		-1+10	R507
				4029		-1+10	R448Avap/liq+R449Avap/liq
				4033		-1+20	R407A+R449A+R410A
				4035		-1+10	R407C+R407A+R407F
				4037		-1+20	R407A+R407F+R448A+R449A+R410A+R32
				4041		-1+20	R410A+R407Cvap/liq+R404A+R134a+R507
				4043		-1+10	R452a
				4045		-1+20	R32+R134a+R404A+R407Cvap/liq+R410A
				4047		-1+20	R134a+R404A+R449A+R452A
				4049		-1+20	R449Avap/liq
				4055		-1+10	R1234yf
				4061		-1+10	R513A
				4065		-1+20	R410A+R454B
				4069		-1+10	R422A
				4071		-1+10	R455Avap/liq



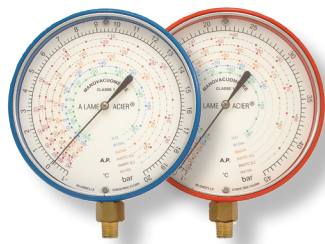
Low Pressure			Reference		Pressure		Refrigerants
Version	Outlet	Fitting	Case	Dial	psi	bar	
Dry	Vertical	1/4" SAE	MA0605V14S				
		1/8" NPT	MA0605V18B				
	Rear	1/4" SAE	MA0605A14S				
		1/8" NPT	MA0605A18B				
Oil filled	Vertical	1/4" SAE	MA1005V14S				
		1/8" NPT	MA1005V18B				
	Rear	1/4" SAE	MA1005A14S				
		1/8" NPT	MA1005A18B				
Pulse-free	Vertical	1/4" SAE	MA0701V14S				
		1/8" NPT	MA0701V18B				
	Rear	1/4" SAE	MA0701A14S				
		1/8" NPT	MA0701A18B				
				4073		-1+10	R134a+R449A+R407C+R455A
				4075		-1+20	R134a+R410A+R513A+R1234ze
				4077		-1+10	R290+R600a
				4079		-1+10	R449A+R452A+R513A+1234yf
				4081		-1+10	R453a
				5785	-30+140	-1+10	R134a
				6592		-1+10	R22+R134a
				6688		-1+10	R134a
				6696		-1+10	R134a+R404A
				7098	-30+140	-1+10	R290+R600A
				7218		-1+10	R134a+R404A+R507+R407Cvap/liq
				7360		-1+10	R407Cvap/liq
				7474		-1+10	R23
				7533		-1+10	R407Cvap/liq+R507

Version	Outlet	Fitting	Reference		Pressure		Refrigerants
			Case	Dial	psi	bar	
Oil filled	Vertical	1/4" SAE	MA0505V14S				
		1/8" NPT	MA0505V18B				
	Rear	1/4" SAE	MA0505A14S				
		1/8" NPT	MA0505A18B				
				1098		0+50	
				1195		-1+30	
				1229		0+15	
				4005		0+80	
				4006		0+160	
				4009		0+30	
				4013		-1+10	
				4015		-1+200	
				4016		0+180	
				4023		0+2,5	
				4050		-1+45	
				4053	0+580	0+40	
				7371		-1+20	

How to read the tables? The complete designation of a pressure gauge comprises the reference of the casing, followed by the reference of the dial. E.g.: Pressure gauge diameter 100mm aluminium, pulse-free, rear outlet, 1/8"NPT, -1+45bar / R410A Case: MA0701A18B; Dial: 1154; Reference: MA0701A18B-1154

Blondelle Pressure Gauge, Ø 100, Aluminium, HP

Exceptional measurement and reading accuracy; up to 6 refrigerants on 1 dial.



- All combinations of refrigerants possible, up to 6 refrigerants on 1 dial.
- Class 1
- 'A Lame Acier' unique bellow mechanism, the highest durability and accuracy.
- Each gauge calibrated individually
- Aluminium case

- Admissible overload: 200%
- Possibility to adjust the needle
- Dry, oil filled or pulse-free
- Outlet: vertical or rear
- Fitting: 1/4" SAE or 1/8" NPT

High Pressure			Reference		Pressure		Refrigerants
Version	Outlet	Fitting	Case	Dial	psi	bar	
Dry	Vertical	1/4" SAE	MA0605V14S				
		1/8" NPT	MA0605V18B				
	Rear	1/4" SAE	MA0605A14S				
		1/8" NPT	MA0605A18B				
Oil filled	Vertical	1/4" SAE	MA1005V14S				
		1/8" NPT	MA1005V18B				
	Rear	1/4" SAE	MA1005A14S				
		1/8" NPT	MA1005A18B				
Pulse-free	Vertical	1/4" SAE	MA0701V14S				
		1/8" NPT	MA0701V18B				
		Rear	1/4" SAE	MA0701A14S			
1/8" NPT	MA0701A18B						
				1078			
				1084			R22+R134a+R404A+R407Cvap/liq+R410A
				1096			R134a+R404A+R22+R407Cvap/liq
				1154			R22+R404A
				1178			R410A
				1183			R744 (Transcritical)
				1186			R744 (Subcritical)
				1190			R134a+R507
				1192			R410A+R407Cvap/liq+R404A+R134a+R507
				2623			R227ea
				4002	-30+2300		R12 + R22 + R502
				4004			R744 (Transcritical)
				4008			R134a+R22+R404A+R507
				4012			R404A+R134a+R407C+R407F
				4014			R134a+R404A+R407Cvap/R407Fvap
				4015			R422Dvap/liq
				4018			R744 (Transcritical)
				4020			R407A
				4022			R744 (Transcritical)
				4026			R434a
				4028			R449Avap/liq
				4030			R507
				4034			R448Avap/liq+R449Avap/liq
				4036			R407A+R449A+R410A
				4038			R407C+R407A+R407F
				4042			R407A+R407F+R448A+R449A+R410A+R32
				4044			R410A+R407Cvap/liq+R404A+R134a+R507
				4046			R452a
				4048			R32+R134a+R404A+R407Cvap/liq+R410A
				4056			R134a+R404A+R449A+R452A
				4062			R1234yf
				4066			R513A
				4070			R410A+R454B
				4072			R422A
							R455Avap/liq



High Pressure		Reference		Pressure		Refrigerants	
Version	Outlet	Fitting	Case	Dial	psi		bar
Dry	Vertical	1/4" SAE	MA0605V14S				
		1/8" NPT	MA0605V18B				
	Rear	1/4" SAE	MA0605A14S				
Oil filled	Vertical	1/8" NPT	MA0605A18B				
		1/4" SAE	MA1005V14S				
	Rear	1/4" SAE	MA1005A14S				
Pulse-free	Vertical	1/8" NPT	MA1005A18B				
		1/4" SAE	MA0701V14S				
	Rear	1/4" SAE	MA0701A14S				
		1/8" NPT	MA0701A18B				
				4074		-1+30	R134a+R449A+R407C+R455A
				4076		-1+45	R134a+R410A+R513A+R1234ze
				4078		-1+30	R290+R600a
				4080		-1+30	R449A+R452A+R513A+1234yf
				4082		-1+30	R453a
				5786	-30+400	-1+30	R134a
				6593		-1+30	R22+R134a
				6689		-1+30	R134a
				6697		-1+30	R134a+R404A
				7099	-30+400	-1+30	R290+R600A
				7219		-1+30	R134a+R404A+R507+R407Cvap/liq
				7361		-1+30	R407Cvap/liq
				7475		-1+30	R23
				7534		-1+30	R407Cvap/liq+R507

Version	Outlet	Fitting	Reference		Pressure		Refrigerants	
			Case	Dial	psi	bar		
Oil filled	Vertical	1/4" SAE	MA0505V14S					
		1/8" NPT	MA0505V18B					
		1/4" SAE	MA0505A14S					
	Rear	1/8" NPT	MA0505A18B					
				1098		0+50		
				1195		-1+30		
				1229		0+15		
				4005		0+80		
				4006		0+160		
				4009		0+30		
				4013		-1+10		
				4015		-1+200		
				4016		0+180		
				4023		0+2,5		
				4050		-1+45		
	4053	0+580	0+40					
	7371		-1+20					

How to read the tables? The complete designation of a pressure gauge comprises the reference of the casing, followed by the reference of the dial. E.g.: Pressure gauge diameter 100mm aluminium, pulse-free, rear outlet, 1/8"NPT, -1+45bar / R410A Case: MA0701A18B; Dial: 1154; Reference: MA0701A18B-1154

Blondelle Pressure Gauge, Ø 100, Composite, LP

Exceptional measurement and reading accuracy; up to 6 refrigerants on 1 dial.



- All combinations of refrigerants possible, up to 6 refrigerants on 1 dial.
- Class 1
- 'A Lame Acier' unique bellow mechanism, the highest durability and accuracy.
- Each gauge calibrated individually
- Composite case

- Admissible overload: 200%
- Possibility to adjust the needle
- Dry, oil filled or pulse-free
- Outlet: vertical or rear
- Fitting: 1/4" SAE or 1/8" NPT

Low Pressure			Reference		Pressure		Refrigerants
Version	Outlet	Fitting	Case	Dial	psi	bar	
Dry	Vertical	1/4" SAE	MA0607V14S				
		1/8" NPT	MA0607V18B				
	Rear	1/4" SAE	MA0607A14S				
		1/8" NPT	MA0607A18B				
Oil filled	Vertical	1/4" SAE	MA1007V14S				
		1/8" NPT	MA1007V18B				
	Rear	1/4" SAE	MA1007A14S				
		1/8" NPT	MA1007A18B				
Pulse-free	Vertical	1/4" SAE	MA0703V14S				
		1/8" NPT	MA0703V18B				
	Rear	1/4" SAE	MA0703A14S				
		1/8" NPT	MA0703A18B				
				1077		-1+20	R22+R134a+R404A+R407Cvap/liq+R410A
				1083		-1+10	R134a+R404A+R22+R407Cvap/liq
				1095		-1+10	R22+R404A
				1097		-1+6	R170
				1151		-1+30	R744 (Subcritical)
				1153		-1+20	R410A
				1177		-1+80	R744 (Transcritical)
				1184		-1+100	R744 (Transcritical)
				1185		-1+10	R134a+R507
				1189		-1+20	R410A+R407Cvap/liq+R404A+R134a+R507
				1191		-1+10	R227ea
				2622		-1+10	R12 + R22 + R502
				4001	-30+1200	-1+80	R744 (Transcritical)
				4003		-1+10	R134a+R22+R404A+R507
				4007		-1+10	R404A+R134a+R407C+R407F
				4011		-1+10	R134a+R404A+R407CvapR407Fvap
				4013		-1+10	R422Dvap/liq
				4017		-1+10	R407Avap/liq
				4019		-1+140	R744 (Transcritical)
				4021		-1+20	R434a
				4025		-1+10	R449Avap/liq
				4027		-1+10	R507
				4029		-1+10	R448Avap/liq+R449Avap/liq
				4033		-1+20	R407A+R449A+R410A
				4035		-1+10	R407C+R407A+R407F
				4037		-1+20	R407A+R407F+R448A+R449A+R410A+R32
				4041		-1+20	R410A+R407Cvap/liq+R404A+R134a+R507
				4043		-1+10	R452a
				4045		-1+20	R32+R134a+R404A+R407Cvap/liq+R410A
				4047		-1+20	R134a+R404A+R449A+R452A
				4049		-1+20	R449Avap/liq
				4055		-1+10	R1234yf
				4061		-1+10	R513A
				4065		-1+20	R410A+R454B
				4069		-1+10	R422A
				4071		-1+10	R455Avap/liq



Low Pressure			Reference		Pressure		Refrigerants
Version	Outlet	Fitting	Case	Dial	psi	bar	
Dry	Vertical	1/4" SAE	MA0607V14S				
		1/8" NPT	MA0607V18B				
	Rear	1/4" SAE	MA0607A14S				
		1/8" NPT	MA0607A18B				
Oil filled	Vertical	1/4" SAE	MA1007V14S				
		1/8" NPT	MA1007V18B				
	Rear	1/4" SAE	MA1007A14S				
		1/8" NPT	MA1007A18B				
Pulse-free	Vertical	1/4" SAE	MA0703V14S				
		1/8" NPT	MA0703V18B				
	Rear	1/4" SAE	MA0703A14S				
		1/8" NPT	MA0703A18B				
				4073		-1+10	R134a+R449A+R407C+R455A
				4075		-1+20	R134a+R410A+R513A+R1234ze
				4077		-1+10	R290+R600a
				4079		-1+10	R449A+R452A+R513A+1234yf
				4081		-1+10	R453a
				5785	-30+140	-1+10	R134a
				6592		-1+10	R22+R134a
				6688		-1+10	R134a
				6696		-1+10	R134a+R404A
				7098	-30+140	-1+10	R290+R600A
				7218		-1+10	R134a+R404A+R507+R407Cvap/liq
				7360		-1+10	R407Cvap/liq
				7474		-1+10	R23
				7533		-1+10	R407Cvap/liq+R507

Version	Outlet	Fitting	Reference		Pressure		Refrigerants
			Case	Dial	psi	bar	
Oil filled	Vertical	1/4" SAE	MA0507V14S				
		1/8" NPT	MA0507V18B				
	Rear	1/4" SAE	MA0507A14S				
		1/8" NPT	MA0507A18B				
				1098		0+50	
				1195		-1+30	
				1229		0+15	
				4005		0+80	
				4006		0+160	
				4009		0+30	
				4013		-1+10	
				4015		-1+200	
				4016		0+180	
				4023		0+2,5	
				4050		-1+45	
				4053	0+580	0+40	
				7371		-1+20	

How to read the tables? The complete designation of a pressure gauge comprises the reference of the casing, followed by the reference of the dial. E.g.: Pressure gauge diameter 100mm composite, pulse-free, rear outlet, 1/8"NPT, -1+45bar / R410A. Case: MA0703A18B; Dial: 1154; Reference: MA0703A18B-1154

Blondelle Pressure Gauge, Ø 100, Composite, HP

Exceptional measurement and reading accuracy; up to 6 refrigerants on 1 dial.



- All combinations of refrigerants possible, up to 6 refrigerants on 1 dial.
- Class 1
- 'A Lame Acier' unique bellow mechanism, the highest durability and accuracy.
- Each gauge calibrated individually
- Composite case

- Admissible overload: 200%
- Possibility to adjust the needle
- Dry, oil filled or pulse-free
- Outlet: vertical or rear
- Fitting: 1/4" SAE or 1/8" NPT

High Pressure			Reference		Pressure		Refrigerants
Version	Outlet	Fitting	Case	Dial	psi	bar	
Dry	Vertical	1/4" SAE	MA0607V14S				
		1/8" NPT	MA0607V18B				
	Rear	1/4" SAE	MA0607A14S				
		1/8" NPT	MA0607A18B				
Oil filled	Vertical	1/4" SAE	MA1007V14S				
		1/8" NPT	MA1007V18B				
	Rear	1/4" SAE	MA1007A14S				
		1/8" NPT	MA1007A18B				
Pulse-free	Vertical	1/4" SAE	MA0703V14S				
		1/8" NPT	MA0703V18B				
	Rear	1/4" SAE	MA0703A14S				
		1/8" NPT	MA0703A18B				
				1078			
				1084			R22+R134a+R404A+R407Cvap/liq+R410A
				1096			R134a+R404A+R22+R407Cvap/liq
				1154			R22+R404A
				1178			R410A
				1183			R744 (Transcritical)
				1186			R744 (Subcritical)
				1190			R134a+R507
				1192			R410A+R407Cvap/liq+R404A+R134a+R507
				2623			R227ea
				4002	-30+2300		R12 + R22 + R502
				4004			R744 (Transcritical)
				4008			R134a+R22+R404A+R507
				4012			R404A+R134a+R407C+R407F
				4014			R134a+R404A+R407Cvap/R407Fvap
				4015			R422Dvap/liq
				4018			R744 (Transcritical)
				4020			R407A
				4022			R744 (Transcritical)
				4026			R434a
				4028			R449Avap/liq
				4030			R507
				4034			R448Avap/liq+R449Avap/liq
				4036			R407A+R449A+R410A
				4038			R407C+R407A+R407F
				4042			R407A+R407F+R448A+R449A+R410A+R32
				4044			R410A+R407Cvap/liq+R404A+R134a+R507
				4046			R452a
				4048			R32+R134a+R404A+R407Cvap/liq+R410A
				4056			R134a+R404A+R449A+R452A
				4062			R1234yf
				4066			R513A
				4070			R410A+R454B
				4072			R422A
							R455Avap/liq



High Pressure			Reference		Pressure		Refrigerants
Version	Outlet	Fitting	Case	Dial	psi	bar	
Dry	Vertical	1/4" SAE	MA0607V14S				
		1/8" NPT	MA0607V18B				
	Rear	1/4" SAE	MA0607A14S				
		1/8" NPT	MA0607A18B				
Oil filled	Vertical	1/4" SAE	MA1007V14S				
		1/8" NPT	MA1007V18B				
	Rear	1/4" SAE	MA1007A14S				
		1/8" NPT	MA1007A18B				
Pulse-free	Vertical	1/4" SAE	MA0703V14S				
		1/8" NPT	MA0703V18B				
	Rear	1/4" SAE	MA0703A14S				
		1/8" NPT	MA0703A18B				
				4074		-1+30	R134a+R449A+R407C+R455A
				4076		-1+45	R134a+R410A+R513A+R1234ze
				4078		-1+30	R290+R600a
				4080		-1+30	R449A+R452A+R513A+1234yf
				4082		-1+30	R453a
				5786	-30+400	-1+30	R134a
				6593		-1+30	R22+R134a
				6689		-1+30	R134a
				6697		-1+30	R134a+R404A
				7099	-30+400	-1+30	R290+R600A
				7219		-1+30	R134a+R404A+R507+R407Cvap/liq
				7361		-1+30	R407Cvap/liq
				7475		-1+30	R23
				7534		-1+30	R407Cvap/liq+R507

Version	Outlet	Fitting	Reference		Pressure		Refrigerants	
			Case	Dial	psi	bar		
Oil filled	Vertical	1/4" SAE	MA0507V14S					
		1/8" NPT	MA0507V18B					
		Rear	1/4" SAE	MA0507A14S				
			1/8" NPT	MA0507A18B				
					1098		0+50	
					1195		-1+30	
					1229		0+15	
					4005		0+80	
					4006		0+160	
					4009		0+30	
					4013		-1+10	
					4015		-1+200	
					4016		0+180	
					4023		0+2,5	
					4050		-1+45	
					4053	0+580	0+40	
				7371		-1+20		

How to read the tables? The complete designation of a pressure gauge comprises the reference of the casing, followed by the reference of the dial. E.g.: Pressure gauge diameter 100mm composite, pulse-free, rear outlet, 1/8"NPT, -1+45bar / R410A. Case: MA0703A18B; Dial: 1154; Reference: MA0703A18B-1154

Blondelle NH3 Pressure Gauge

Gauge developed for use on ammonia systems



- Class 1 'A Lame Acier' unique bellow mechanism, the highest durability and accuracy
- Ammonia resistant design
- All parts in contact with ammonia made of stainless steel 316L
- Ø 80 high quality composite casing or Ø 100 aluminium case
- Dry, oil filled or pulse-free

- Outlet: vertical or rear
- Fitting: 1/4" GAZ or 1/2" GAZ
- Each gauge calibrated individually
- Admissible overload: 200%
- Possibility to adjust the needle

D80 Composite case			Reference		Pressure		Refrigerants
Version	Outlet	Fitting	Case	Dial	psi	bar	
Dry	Vertical	1/4" GAZ	MA0604V14G				
		1/2" GAZ	MA0604V12G				
		1/8" NPT	MA0604V18B				
Rear	1/4" GAZ	MA0604A14G					
	1/2" GAZ	MA0604A12G					
	1/8" NPT	MA0604A18B					
Oil filled	Vertical	1/4" GAZ	MA1004V14G				
		1/2" GAZ	MA1004V12G				
		1/8" NPT	MA1004V18B				
Rear	1/4" GAZ	MA1004A14G					
	1/2" GAZ	MA1004A12G					
	1/8" NPT	MA1004A18B					
Pulse-free	Vertical	1/4" GAZ	MA0902V14G				
		1/2" GAZ	MA0902V12G				
		1/8" NPT	MA0902V18B				
	Rear	1/4" GAZ	MA0902A14G				
		1/2" GAZ	MA0902A12G				
		1/8" NPT	MA0902A18B				
			1161		-1+10	R717	
			1162		-1+30	R717	
			6078	-30+140	-1+10	R717	
			6079	-30+400	-1+30	R717	
			3017		-1+10	R717+R723	
			3018		-1+30	R717+R723	

D100 Aluminium case			Reference		Pressure		Refrigerants
Version	Outlet	Fitting	Case	Dial	psi	bar	
Dry	Vertical	1/4" GAZ	MA0606V14G				
		1/2" GAZ	MA0606V12G				
		1/8" NPT	MA0606V18B				
Rear	1/4" GAZ	MA0606A14G					
	1/2" GAZ	MA0606A12G					
	1/8" NPT	MA0606A18B					
Oil filled	Vertical	1/4" GAZ	MA1006V14G				
		1/2" GAZ	MA1006V12G				
		1/8" NPT	MA1006V18B				
Rear	1/4" GAZ	MA1006A14G					
	1/2" GAZ	MA1006A12G					
	1/8" NPT	MA1006A18B					
Pulse-free	Vertical	1/4" GAZ	MA0704V14G				
		1/2" GAZ	MA0704V12G				
		1/8" NPT	MA0704V18B				
	Rear	1/4" GAZ	MA0704A14G				
		1/2" GAZ	MA0704A12G				
		1/8" NPT	MA0704A18B				
			1261	-30+140	-1+10	R717	
			1262	-30+400	-1+30	R717	

How to read the tables? The complete designation of a pressure gauge comprises the reference of the casing, followed by the reference of the dial. E.g.: Pressure gauge diameter 80mm composite, oil filled, rear outlet, 1/4"GAZ, -1+10bar / NH3. Case: MA1004A14G; Dial: 1161; Reference MA1004A14G-1161



Blondelle Accessories for Aluminium Gauges

Gauge fixations



Fastening mount	
Ø	Reference
60 mm	AC0306-5269
100 mm	AC0306-192

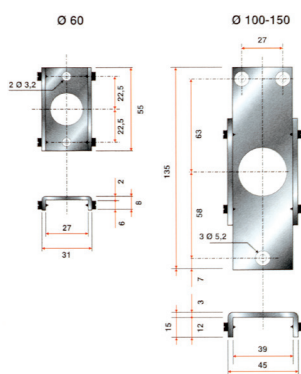
Fastening clamp	
Ø	Reference
60 mm	AC0305-5400
100 mm	AC0305-2112

Collar*	
Ø	Reference
60 mm	AC0302-185.30
100 mm	AC0302-190.30

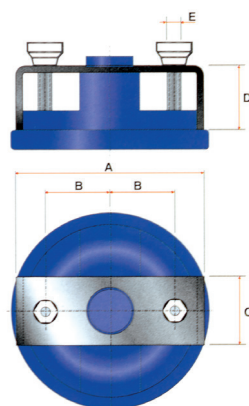
* only for dry versions

Dimensions

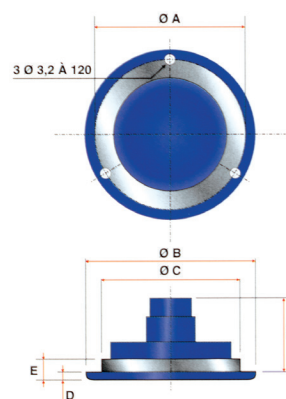
Fastening mount



Fastening clamp



Collar



Dimensions in mm				
Ø	60	100	150	
A	72	114	178	
B	24	40	60	
C	33	40	40	
D	28,5	37	48	
E	M4	M6	M6	

Dimensions in mm				
Ø	60	100	150	
A	80	122	180	
B	88	130	189	
C	72	114	171	
D	4	4,5	4,5	
E	10	10,5	10,5	
F	42,5	54	52	

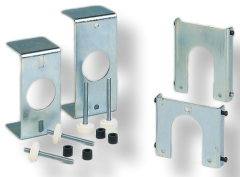
Gauge protections



Anti-impact protection		
Ø	Color	Reference
60 mm	Red	AC0308-1259.02
	Blue	AC0308-1259.03
100 mm	Red	AC0308-1260.02
	Blue	AC0308-1260.03

Blondelle Accessories for Composite Gauges

Gauge fixations

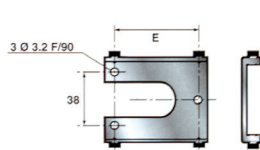
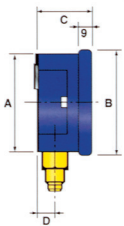


Fastening mount	
Ø	Reference
60 mm	AC0306-6369
80 mm	AC0306-6370
100 mm	AC0306-6371

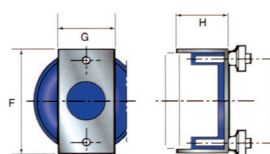
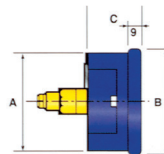
Fastening clamp	
Ø	Reference
60 mm	AC0305-5400
80 mm	AC0305-6134
100 mm	AC0305-2112

Dimensions

Fastening mount



Fastening clamp



Dimensions in mm			
Ø	60	80	100
A	66	79	108
B	71	88	119
C	35	35	39
D	9	11	11
E	36	56	55
F	70	88	114
G	35	40	40
H	34	33	37
I	57	70	40

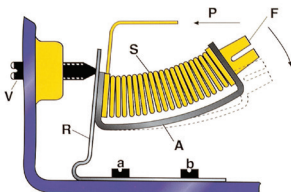
Gauge protections



Anti-impact protection		
Ø	Color	Reference
60 mm	Red	AC0308-6123.02
	Yellow	AC0308-6123.04
	Blue	AC0308-6123.03
80 mm	Red	AC0308-6124.02
	Yellow	AC0308-6124.04
	Blue	AC0308-6124.03

Blondelle 'A LAME ACIER' Principle

Pressure-sensitive element formed of a bellow and a hardened stabilised blade.



- Class 1 accuracy: 1% of the end of the scale.
- Admissible overload: 200% for pressure gauge
- Accidental pressure: 50% for vacuum gauge
- Each instrument is calibrated individually.
- Perfect impression of dials through tampography provides you with high reading sensitivity.

- Light alloy casing or very high resistance injection moulded composite
- Operation temperature: -40°C +70°C
- Your logo can appear on the dials
- Endless combinations of refrigerants

- A = Steel plate (Lame Acier)
- S = Metal bellow
- R = Fixing square of motor element
- F = Kinematics articulation fork
- V = 0-screw
- P = Fluid inlet

- The "A Lame Acier®" pressure gauge comprises a pressure-sensitive element formed of a metal bellow and a steel plate.
- The steel plate A describes a generating line proportional to the pressure existing inside the bellow S (bellow situated between the two arched ends of the steel plate).
- One of the ends of the steel plate is fixed to bracket R which itself is fixed to the housing at a-b.
- A fork F fixed to the other end drives the kinematics, thus rotating the needle.
- The adjusting screw V - accessible from the outside - enables adjusting the position of the needle.



BLONDELLE MANIFOLDS





Blondelle 1 Lane Manifold



- Unique spindle valve, always tight without effort
- Class 1, 'A Lame Acier' gauge
- Ø 60 or Ø 80
- Dry, oil filled or pulse-free (only Ø 80)
- All combinations of refrigerants possible
- Low Pressure or High Pressure gauge fitted
- Available with or without appropriate charging hoses

Supplied with: 2 red/blue charging hoses, length 1 m; option ball valve. R410A: High Resistance hoses : one hose with two 1/4" SAE fittings +1 charging line with one 5/16" and one 1/4" SAE fitting.

Pressure	Gauges		Manifold	Reference			Scales	
	Diameter	Type		Dial	Option	bar	psi	Refrigerants
Low pressure	60 mm	Dry	FR0801BP					
	80 mm	Oil filled	FR1001BP					
High pressure	60 mm	Dry	FR0802BP					
		Oil filled	FR1002BP					
	80 mm	Pulse-free	FR0901BP					
		Dry	FR0801HP					
	80 mm	Oil filled	FR1001HP					
		Dry	FR0802HP					
	80 mm	Oil filled	FR1002HP					
		Pulse-free	FR0901HP					
					E01	x	x	R12+R22+R502
					E02	x	x	R134a+R404A
				E03	x		R22+R134a+R404A	
				E04	x		R134a+R404A+R507+R407C	
				E05	x	x	R290+R600	
				E06	x		R22+R134a+R404A+R507	
				E07	x		R134a+R407Cvap/liq	
				E08	x		R22+R134a+R404A+R407C	
				E09	x		R134a+R22+R409Avap/liq	
				E10	x		R22+R417Avap/liq	
				E11	x		R134a+R404A+R407Cvap/liq	
				E12	x		R134a+R22+R407Cvap/liq	
				E13	x		R507+R407Cvap/liq	
				E15	x		R410A	
				E16	x		R1270	
				E17	x		R410A+R22+R134a+R407C	
				E20	x		R744 (-1+30 Bar, -1+50 Bar)*	
				E21	x		R410A+R22+R404A+R134a	
				E23	x		R23	
				E24	x		R22+R410A+R407Cvap/liq	
				E27	x		R410A+R407C+R404A+R134a	
				E28	x		R422Dvap/liq+R422Avap/liq+R417Avap/liq	
				E33	x		R744 (-1+30 Bar, -1+60 Bar)*	
				E34	x	x	R744 (-1+30 Bar/435psi, -1+50 Bar/725psi)*	
				E38	x		R134a+R1234yf+R1234ze	
				E40	x		R227ea	
				E42	x	x	R22+R290+R600A	
				E43	x		R134a+R404A+R407F	
				E44	x		R32	
				E46	x		R407A+R407F+R404A	
				E47	x		R404A+R407A+R407F+R449A	
				E48	x		R134a+R404A+R407A+R407F	
				E49	x		R32+R410A	
				E50	x		R290+R134a+R407C+R404A	
				E51	x		R404A+R508	
				E52	x		R32+R410A+R134a+R407C	
				E53	x		R134a+R404A+R22+R449A	
				E54	x		R452a	
				E55	x		R134a+R404A+R407F+R449A	
				E56	x		R134a+R404A+R449A+R407C	
				E57	x		R134a+R404A+R407F+R407C	
				E58	x		R452a+R404A+R134a	
				E60	x		R32+R410A+R407C	
				E61	x		R448A+R449A+R407F	
				E62	x		R23+R507	
				E63	x		R448A+R449A+R450A+R452A	
				E64	x		R449Avap/liq+R448Avap/liq	
				E65	x		R449A+R452+R513+1234yf	
				E66	x		R404A+R449A+R452A+R134a	
				E67	x		R407A+R449A+R410A	
				E68	x		R448A+R449A+R452A+R455A	
				E69	x		R410A+R134a+R407Cvap/liq	
				E70	x		R404A+R448A+R449A+R134a	
				E71	x		R404A+R452A+R134a+R410A	
				E72	x		R410A+R404A+R448A+R134a	
				E73	x		R442A+R134a+R404A	
				E74	x		R32+R134a+R407C+R404A	
					V		Option: Charging hoses length 1m with ball valve	



Pressure	Gauges		Reference	Reference			Scales		
	Diameter	Type		Manifold	Dial	Option	bar	psi	Refrigerants
Low pressure	60 mm	Dry	FR0801BP						
	80 mm	Oil filled	FR1001BP						
High pressure	60 mm	Dry	FR0802BP						
		Oil filled	FR1002BP						
	80 mm	Pulse-free	FR0901BP						
		Dry	FR0801HP						
	80 mm	Oil filled	FR1001HP						
		Dry	FR0802HP						
	80 mm	Oil filled	FR1002HP						
		Pulse-free	FR0901HP						
				E77			x		-1+20Bar
				E78			x		R134a+R404A+R449A+R448A+R452A
			E79			x		R134a	
			E80			x		R1234yf+R32+R407C+R134a	
			E81			x		R449+R452+R32+R134a	
			E82			x		R404A+R407F+R448A+R449A	
			E83			x		R449+R410A+R32+R134a	
			E84			x		R134a+R448A+R452A+R455A	
			E85			x		R1234yf+R1234ze+R454C+R455A	
			E86			x		-1+50Bar	
			E87			x		R32+R404A+R410A+R134a	
			E88			x		R134a+R404A+R449A+R452A	
			E89			x		-1+60Bar	
			E90			x		R410A+R454B	
			E91			x		R410A+R404A+R449A+R134a	
			E92			x		R449A+R455A+R32+R410A	
			E93			x		R134a+R513A+R1234yf+R1234ze	
			E94			x		R449A+R452A+R513A+R404A	
			E95			x		R513A	
			E96			x		R290+R454C+R455A+R1234yf	
			E97			x		R134a+R407C+R513A	
			E98			x		R404A+R455Avap/liq+R454Cvap/liq	
			E99			x	x	R410A	
			E101			x		R454A+R454B+R454C+R404A	
			E102			x		R404A+R449A+R513A+R134a	
			E104			x		R404A+R448A+R449A+R455A	
			E105			x		R422Dvap/liq+R22	
			E106			x		R1234yf+R452A+R134a	
			E107			x		R134a+R404A+R448A+R452A	
			E108			x		R290+R600+R600a	
			E109			x		R32+R407C+R410A+R290	
			E110			x		R454C+R455A+R471A+R1234yf	
			E111			x	x	R410A+R32+R454B	
			E112			x		R134a+R407C+R404A+R448A+R452A	
			E113			x		R404A+R513A+R1234yf+R134a	
			E114			x		R448A+R449A+R454A+R455A	
			E115			x		R290+R452A+R455A	
					V			Option: Charging hoses length 1m with ball valve	

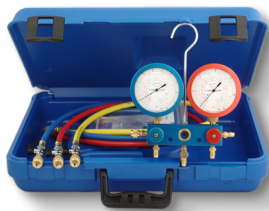
Bare body	Reference
Low Pressure	FR0101BP
High Pressure	FR0101HP

* For transcritical references look at page 54

E.g.: 1 lane aluminium manifold LP, charging hoses, 80mm gauge, oil filled, refrigerants: R134a+R404A: Manifold: FR1002BP; Refrigerants: E02; Reference: FR1002BP-E02



Blondelle 2 Lane Manifold



- Unique spindle valves, always tight without effort
- Class 1, 'A Lame Acier' gauges
- Ø 60 or Ø 80
- Dry, oil filled or pulse-free (only Ø 80)
- All combinations of refrigerants possible
- Sight glass and hook (also available without sightglass)
- Available with or without the appropriate charging hoses

Supplied in a Blondelle plastic carrying case including: 3 charging hoses, red, yellow and blue; length 1 m with two 1/4" SAE fittings, optional ball valves. For R410A High Resistance hoses with Teflon gaskets. Red and blue hoses are fitted with a 5/16" nut at the curved side.

Material	Other specs	Gauges		Reference			bar	psi	Refrigerants	
		Diameter	Type	Manifold	Dial	Option				
Aluminium	Complete case	60 mm	Dry	FR1103						
			Oil filled	FR1303						
	80 mm	Dry	FR1104							
		Oil filled	FR1304							
	+ no sight glass	60 mm	Oil filled	FR1305						
			Pulse-free	FR1202						
	Without case & hoses	80 mm	Dry	FR0203						
			Oil filled	FR0403						
			Dry	FR0204						
			Oil filled	FR0404						
			Pulse-free	FR0302						
			E01	x	x	R12+R22+R502				
			E02	x	x	R134a+R404A				
			E03	x		R22+R134a+R404A				
			E04	x		R134a+R404A+R507+R407C				
			E05	x	x	R290+R600				
			E06	x		R22+R134a+R404A+R507				
			E07	x		R134a+R407Cvap/liq				
	E08	x		R22+R134a+R404A+R407C						
	E09	x		R134a+R22+R409Avap/liq						
	E10	x		R22+R417Avap/liq						
	E11	x		R134a+R404A+R407Cvap/liq						
	E12	x		R134a+R22+R407Cvap/liq						
	E13	x		R507+R407Cvap/liq						
	E15	x		R410A						
	E16	x		R1270						
	E17	x		R410A+R22+R134a+R407C						
	E20	x		R744 (-1+30 Bar, -1+50 Bar)*						
	E21	x		R410A+R22+R404A+R134a						
	E23	x		R23						
	E24	x		R407Cvap/liq+R410A+R22						
	E27	x		R410A+R407C+R404A+R134a						
E28	x		R422Dvap/liq+R422Avap/liq+R417Avap/liq							
E33	x		R744 (-1+30 Bar, -1+60 Bar)*							
E34	x	x	R744 (-1+30 Bar/435psi, -1+50 Bar/725psi)*							
E38	x		R134a+R1234yf+R1234ze							
E40	x		R227ea							
E42	x	x	R22+R290+R600A							
E43	x		R134a+R404A+R407F							
E44	x		R32							
E46	x		R407A+R407F+R404A							
E47	x		R404A+R407A+R407F+R449A							
E48	x		R134a+R404A+R407A+R407F							
E49	x		R32+R410A							
E50	x		R290+R134a+R407C+R404A							
E51	x		R404A+R508							
E52	x		R32+R410A+R134a+R407C							
E53	x		R134a+R404A+R22+R449A							
E54	x		R452a							
E55	x		R134a+R404A+R407F+R449A							
E56	x		R134a+R404A+R449A+R407C							
E57	x		R134a+R404A+R407F+R407C							
E58	x		R452a+R404A+R134a							
E60	x		R32+R410A+R407C							
E61	x		R448A+R449A+R407F							
E62	x		R23+R507							
E63	x		R448A+R449A+R450A+R452A							
E64	x		R449Avap/liq+R448Avap/liq							
E65	x		R449A+R452+R513+1234yf							
E66	x		R404A+R449A+R452A+R134a							
E67	x		R407A+R449A+R410A							
E68	x		R448A+R449A+R452A+R455A							
E69	x		R410A+R134a+R407Cvap/liq							
E70	x		R404A+R448A+R449A+R134a							
E71	x		R404A+R452A+R134a+R410A							
E72	x		R410A+R404A+R448A+R134a							
E73	x		R442A+R134a+R404A							
E74	x		R32+R134a+R407C+R404A							

V

Option: Charging hoses length 1m with ball valve



Material	Other specs	Gauges		Reference			Scales			
		Diameter	Type	Manifold	Dial	Option	bar	psi	Refrigerants	
Aluminium	Complete case	60 mm	Dry	FR1103						
			Oil filled	FR1303						
	+ no sight glass	80 mm	Dry	FR1104						
			Oil filled	FR1304						
			Oil filled	FR1305						
	Without case & hoses	60 mm	Pulse-free	FR1202						
			Dry	FR0203						
			Oil filled	FR0403						
		80 mm	Dry	FR0204						
			Oil filled	FR0404						
			Pulse-free	FR0302						
			E77	x	2* -1+20Bar					
			E78	x	R134a+R404A+R449A+R448A+R452A					
			E79	x	R134a					
			E80	x	R1234yf+R32+R407C+R134a					
			E81	x	R449+R452+R32+R134a					
			E82	x	R404A+R407F+R448A+R449A					
			E83	x	R449+R410A+R32+R134a					
	E84	x	R134a+R448A+R452A+R455A							
	E85	x	R1234yf+R1234ze+R454C+R455A							
	E86	x	2* -1+50Bar							
	E87	x	R32+R404A+R410A+R134a							
	E88	x	R134a+R404A+R449A+R452A							
	E89	x	2* -1+60Bar							
	E90	x	R410A+R454B							
	E91	x	R410A+R404A+R449A+R134a							
	E92	x	R449A+R455A+R32+R410A							
	E93	x	R134a+R513A+1234yf+R1234ze							
	E94	x	R449A+R452A+R513A+R404A							
	E95	x	R513A							
	E96	x	R290+R454C+R455A+R1234yf							
	E97	x	R134a+R407C+R513A							
	E98	x	R404A+R455Avap/liq+R454Cvap/liq							
E99	x	R410A								
E101	x	R454A+R454B+R454C+R404A								
E102	x	R404A+R449A+R513A+R134a								
E104	x	R404A+R448A+R449A+R455A								
E105	x	R422Dvap/liq+R22								
E106	x	R1234yf+R452A+R134a								
E107	x	R134a+R404A+R448A+R452A								
E108	x	R290+R600+R600a								
E109	x	R32+R407C+R410A+R290								
E110	x	R454C+R455A+R471A+R1234yf								
E111	x	R410A+R32+R454B								
E112	x	R134a+R407C+R404A+R448A+R452A								
E113	x	R404A+R513A+R1234yf+R134a								
E114	x	R448A+R449A+R454A+R455A								
E115	x	R290+R452A+R455A								
V						Option: Charging hoses length 1m with ball valve				

* For transcritical references look at page 54

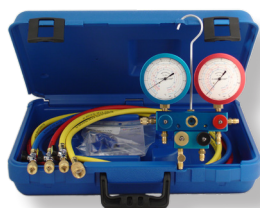
Bare body	Reference
Aluminium	FR0102

How to read the tables? The complete designation of a manifold comprises on the one hand the references of the manifold and gauge and on the other hand the reference of the refrigerants. E.g.: 2 lane aluminium manifold, without charging hoses, 80mm gauges, oil filled, refrigerants: R22+R134a +R404A: Manifold: FR0404; Refrigerants: E03; Reference: FR0404-E03



Blondelle 4 Lane Manifold

4 valves



- Unique spindle valves, always tight without effort
- Class 1, 'A Lame Acier', Ø 80 gauges
- 4 lanes - 4 valves
- All combinations of refrigerants possible
- Dry, oil filled or pulse-free
- Sight glass and hook
- Available with or without the appropriate charging hoses

Supplied in a Blondelle plastic carrying case including: 3 charging hoses, red, yellow and blue; length 1,5 m with 1/4" SAE fitting, optional ball valves and 1 yellow charging line, length 1 m with 3/8" fitting. For R410A High Resistance hoses with Teflon gaskets. Red and blue hoses are fitted with a 5/16" nut at the curved side.

Valves	Manifold		Gauges Type	Reference			Scales		
	Other specs			Manifold	Dial	Option	bar	psi	Refrigerants
4 valves	Complete case		Dry	FR1108-4R					
			Oil filled	FR1308-4R					
	Without case & hoses		Pulse-free	FR1204-4R					
			Dry	FR0208-4R					
Special vacuum	Vacuum gauge with valve		Oil filled	FR0408-4R					
			Pulse-free	FR0304-4R					
			Oil filled	FR1310					
				E01		x	x		R12+R22+R502
				E02		x	x		R134a+R404A
				E03		x			R22+R134a+R404A
				E04		x			R134a+R404A+R507+R407C
				E05		x	x		R290+R600
				E06		x			R22+R134a+R404A+R507
				E07		x			R134a+R407Cvap/liq
				E08		x			R22+R134a+R404A+R407C
				E09		x			R134a+R22+R409Avap/liq
				E10		x			R22+R417Avap/liq
				E11		x			R134a+R404A+R407Cvap/liq
				E12		x			R134a+R22+R407Cvap/liq
				E13		x			R507+R407Cvap/liq
				E15		x			R410A
				E16		x			R1270
				E17		x			R410A+R22+R134a+R407C
				E20		x			R744 (-1+30 Bar, -1+50 Bar)*
				E21		x			R410A+R22+R404A+R134a
				E23		x			R23
				E24		x			R407Cvap/liq+R410A+R22
				E27		x			R410A+R407C+R404A+R134a
				E28		x			R422Dvap/liq+R422Avap/liq+R417Avap/liq
				E33		x			R744 (-1+30Bar, -1+60Bar)*
				E34		x	x		R744 (-1+30Bar/435psi,-1+50Bar/725psi)*
				E38		x			R134a+R1234yf+R1234ze
				E40		x			R227ea
				E42		x	x		R22+R290+R600A
				E43		x			R134a+R404A+R407F
				E44		x			R32
				E46		x			R407A+R407F+R404A
				E47		x			R404A+R407A+R407F+R449A
				E48		x			R134a+R404A+R407A+R407F
				E49		x			R32+R410A
				E50		x			R290+R134a+R407C+R404A
				E51		x			R404A+R508
				E52		x			R32+R410A+R134a+R407C
				E53		x			R134a+R404A+R22+R449A
				E54		x			R452a
				E55		x			R134a+R404A+R407F+R449A
				E56		x			R134a+R404A+R449A+R407C
				E57		x			R134a+R404A+R407F+R407C
				E58		x			R452a+R404A+R134a
				E60		x			R32+R410A+R407C
				E61		x			R448A+R449A+R407F
				E62		x			R23+R507
				E63		x			R448A+R449A+R450A+R452A
				E64		x			R449Avap/liq+R448Avap/liq
				E65		x			R449A+R452+R513+1234yf
				E66		x			R404A+R449A+R452A+R134a
				E67		x			R407A+R449A+R410A
				E68		x			R448A+R449A+R452A+R455A
				E69		x			R410A+R134a+R407Cvap/liq
				E70		x			R404A+R448A+R449A+R134a
				E71		x			R404A+R452A+R134a+R410A
				E72		x			R410A+R404A+R448A+R134a
				E73		x			R442A+R134a+R404A
				E74		x			R32+R134a+R407C+R404A
						V			Option: Charging hoses length 1,5m with ball valve



Valves	Manifold		Gauges Type	Reference			Scales	
	Other specs	Manifold		Dial	Option	bar	psi	Refrigerants
4 valves	Complete case		Dry Oil filled Pulse-free	FR1108-4R FR1308-4R FR1204-4R				
	Without case & hoses		Dry Oil filled Pulse-free	FR0208-4R FR0408-4R FR0304-4R				
Special vacuum	Vacuum gauge with valve		Oil filled	FR1310				
				E77		x	x	2* -1+20Bar
				E78		x	x	R134a+R404A+R449A+R448A+R452A
				E79		x		R134a
				E80		x		R1234yf+R32+R407C+R134a
				E81		x	x	R449+R452+R32+R134a
				E82		x		R404A+R407F+R448A+R449A
				E83		x		R449+R410A+R32+R134a
				E84		x		R134a+R448A+R452A+R455A
				E85		x		R1234yf+R1234ze+R454C+R455A
				E86		x		2* -1+50Bar
				E87		x		R32+R404A+R410A+R134a
				E88		x		R134a+R404A+R449A+R452A
				E89		x		2* -1+60Bar
				E90		x		R410A+R454B
				E91		x		R410A+R404A+R449A+R134a
				E92		x		R449A+R455A+R32+R410A
				E93		x		R134a+R513A+1234yf+R1234ze
				E94		x		R449A+R452A+R513A+R404A
				E95		x		R513A
				E96		x		R290+R454C+R455A+R1234yf
				E97		x		R134a+R407C+R513A
				E98		x		R404A+R455Avap/liq+R454Cvap/liq
				E99		x	x	R410A
				E101		x		R454A+R454B+R454C+R404A
				E102		x		R404A+R449A+R513A+R134a
				E104		x		R404A+R448A+R449A+R455A
				E105		x		R422Dvap/liq+R22
				E106		x		R1234yf+R452A+R134a
				E107		x		R134a+R404A+R448A+R452A
				E108		x		R290+R600+R600a
				E109		x		R32+R407C+R410A+R290
				E110		x		R454C+R455A+R471A+R1234yf
				E111		x	x	R410A+R32+R454B
				E112		x		R134a+R407C+R404A+R448A+R452A
				E113		x		R404A+R513A+R1234yf+R134a
				E114		x		R448A+R449A+R454A+R455A
				E115		x		R290+R452A+R455A
					V			Option: Charging hoses length 1,5m with ball valve

* For transcritical references look at page 54

Bare body	Reference
Central valve	FR0104
4 valves	FR0104-4R

How to read the tables? The complete designation of a manifold comprises on the one hand the references of the manifold and gauge and on the other hand the reference of the refrigerants. E.g.: 4 lane & 4 valves aluminium manifold, complete case, 80mm gauges, oil filled, refrigerants: R134a+R404A: Manifold: FR1308-4R; Refrigerants: E02; Reference: FR1308-4R-E02



Blondelle 4 Lane Manifold

Central valve



- Unique spindle valves, always tight without effort
- Class 1, 'A Lame Acier', Ø 80 gauges
- 4 lanes - Central Valve
- All combinations of refrigerants possible
- Dry, oil filled or pulse-free
- Sight glass and hook
- Available with or without the appropriate charging hoses

Supplied in a Blondelle plastic carrying case including: 3 charging hoses, red, yellow and blue; length 1,5 m with 1/4" SAE fitting, optional ball valves and 1 yellow vacuum charging line, length 1 m with 3/8" fitting. For R410A High Resistance hoses with Teflon gaskets. Red and blue hoses are fitted with a 5/16" nut at the curved side. Optional: ball valve

Manifold		Gauges	Reference			Scales		
Valves	Other specs	Type	Manifold	Dial	Option	bar	psi	Refrigerants
Central valve	Complete case	Dry	FR1108					
		Oil filled	FR1308					
		Pulse-free	FR1204					
	Without case & hoses	Dry	FR0208					
		Oil filled	FR0408					
		Pulse-free	FR0304					
				E01		x	x	R12+R22+R502
				E02		x	x	R134a+R404A
				E03		x		R22+R134a+R404A
				E04		x		R134a+R404A+R507+R407C
				E05		x	x	R290+R600
				E06		x		R22+R134a+R404A+R507
				E07		x		R134a+R407Cvap/liq
				E08		x		R22+R134a+R404A+R407C
				E09		x		R134a+R22+R409Avap/liq
				E10		x		R22+R417Avap/liq
				E11		x		R134a+R404A+R407Cvap/liq
				E12		x		R134a+R22+R407Cvap/liq
				E13		x		R507+R407Cvap/liq
				E15		x		R410A
				E16		x		R1270
				E17		x		R410A+R22+R134a+R407C
				E20		x		R744 (-1+30 Bar, -1+50 Bar)*
				E21		x		R410A+R22+R404A+R134a
				E23		x		R23
				E24		x		R407Cvap/liq+R410A+R22
				E27		x		R410A+R407C+R404A+R134a
				E28		x		R422Dvap/liq+R422Avap/liq+R417Avap/liq
				E33		x		R744 (-1+30Bar, -1+60Bar)*
				E34		x	x	R744 (-1+30Bar/435psi,-1+50Bar/725psi)*
				E38		x		R134a+R1234yf+R1234ze
				E40		x		R227ea
				E42		x	x	R22+R290+R600A
				E43		x		R134a+R404A+R407F
				E44		x		R32
				E46		x		R407A+R407F+R404A
				E47		x		R404A+R407A+R407F+R449A
				E48		x		R134a+R404A+R407A+R407F
				E49		x		R32+R410A
				E50		x		R290+R134a+R407C+R404A
				E51		x		R404A+R508
				E52		x		R32+R410A+R134a+R407C
				E53		x		R134a+R404A+R22+R449A
				E54		x		R452a
				E55		x		R134a+R404A+R407F+R449A
				E56		x		R134a+R404A+R449A+R407C
				E57		x		R134a+R404A+R407F+R407C
				E58		x		R452a+R404A+R134a
				E60		x		R32+R410A+R407C
				E61		x		R448A+R449A+R407F
				E62		x		R23+R507
				E63		x		R448A+R449A+R450A+R452A
				E64		x		R449Avap/liq+R448Avap/liq
				E65		x		R449A+R452+R513+1234yf
				E66		x		R404A+R449A+R452A+R134a
				E67		x		R407A+R449A+R410A
				E68		x		R448A+R449A+R452A+R455A
				E69		x		R410A+R134a+R407Cvap/liq
				E70		x		R404A+R448A+R449A+R134a
				E71		x		R404A+R452A+R134a+R410A
				E72		x		R410A+R404A+R448A+R134a
				E73		x		R442A+R134a+R404A
				E74		x		R32+R134a+R407C+R404A
					V			Option: Charging hoses length 1,5m with ball valve



Blondelle 2 Lane CO2 Manifold

Transcritical



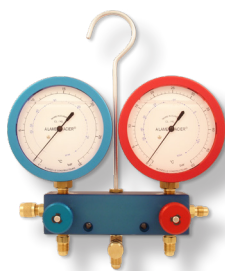
- Refrigerant: R744 (CO2)
- Transcritical: 80/100 bar & 160/200 bar - Bar-°C & Psi-°F
- 2 lane manifold, aluminium body
- Unique spindle valves, always tight without effort
- Class 1, 'A Lame Acier' Ø 80 or Ø 100 gauges
- Dry, oil filled (Ø 80), pulse-free

Supplied in a Blondelle plastic carrying case including:
Transcritical: 3 hoses, length 1meter with 1/4" SAE fittings, WP 200 Bar.

Material	Other specs	Gauges		Reference			Scales		
		Diameter	Type	Manifold	Dial	Option	bar	psi	Refrigerants
Aluminium	Transcritical (complete case)	80 mm	Dry	FR4112					
			Oil filled	FR4312					
			Pulse-free	FR4512					
		100 mm	Dry	FR5512					
			Pulse-free	FR5513					
	Transcritical (Case without hoses)	80 mm	Dry	FR4102					
			Oil filled	FR4302					
			Pulse-free	FR4502					
		100 mm	Dry	FR5502					
			Pulse-free	FR5503					
				E25	x		R744 (-1+80 Bar, -1+160 Bar)		
				E30	x		R744 (-1+100Bar, -1+160Bar)		
				E37	x	x	R744 (-1+80/1200, -1+160/2300 Bar/Psi)		
				E75	x		R744 (-1+80Bar, -1+200Bar)		
				E76	x		R744 (-1+100Bar, -1+200Bar)		
				E103	x	x	R744 (-1+100/1400, -1+160/2300 Bar/Psi)		
					V			Option: charging hoses with isolation valve	

Blondelle 2 Lane CO2 Manifold

Subcritical



- Refrigerant: R744 (CO2)
- Subcritical: 30 bar & 50/60 bar - Bar-°C & Psi-°F
- 2 lane manifold, aluminium body
- Unique spindle valves, always tight without effort
- Class 1, 'A Lame Acier' Ø 80
- Dry, oil filled, pulse-free

Supplied in a Blondelle plastic carrying case including:
Subcritical: 3 hoses, red, blue and yellow, length 1 meter with 1/4" SAE fittings.

Material	Other specs	Gauges		Reference			Scales			
		Diameter	Type	Manifold	Dial	Option	bar	psi	Refrigerants	
Aluminium	2-way - Subcritical (complete case) + no sight glass	80 mm	Dry	FR1104						
			Oil filled	FR1304						
			Oil filled	FR1305						
			Pulse-free	FR1202						
			Oil-filled	FR1308						
			Oil-filled	FR1308-4R						
	4-way - Subcritical 4-way-4-valves-Sub					E20	x		R744 (-1+30 Bar, -1+50 Bar)	
						E33	x		R744 (-1+30 Bar, -1+60 Bar)	
						E34	x	x	R744 (-1+30/435, -1+50/725 Bar/Psi)	
							V			Option: charging hoses with ball valve

Bare body	Reference
Subcritical	FR0102

How to read the tables? The complete designation of a manifold comprises on the one hand the references of the manifold and gauge and on the other hand the reference of the refrigerants.
E.g.: 2 lane aluminium manifold, complete case, 80mm gauges, oil filled, refrigerant: R744, pressure: -1+30Bar, -1+50Bar: Manifold: FR1304; Refrigerants: E20; Reference: FR1304-E20



Blondelle 4 Lane CO2 Manifold

Transcritical



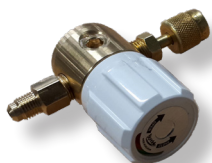
- Refrigerant: R744 (CO2)
- Transcritical: 80/100 bar & 160/200 bar - Bar-°C & Psi-°F
- 4 lane manifold, aluminium body
- Unique spindle valves, always tight without effort
- Class 1, 'A Lame Acier' Ø 80 gauges
- Dry, oil filled, pulse-free

Supplied in a Blondelle plastic carrying case including:
Transcritical: 4 hoses, length 1,5meter with 1/4" SAE fittings, WP 200 Bar.

Material	Other specs	Gauges		Reference			Scales		
		Diameter	Type	Manifold	Dial	Option	bar	psi	Refrigerants
Aluminium	4-lane - Transcritical (complete case)	80 mm	Dry Oil filled Pulse-free	FR4118-4R	E25 E30 E37 E75 E76 E103	x x x x x x	x x x x x x	x x x x x x	R744 (-1+80 Bar, -1+160 Bar)
				FR4318-4R					R744 (-1+100Bar, -1+160Bar)
				FR4518-4R					R744 (-1+80/1200, -1+160/2300 Bar/Psi)
									R744 (-1+80Bar, -1+200Bar)
									R744 (-1+100Bar, -1+200Bar)
									R744 (-1+100/1400, -1+160/2300 Bar/Psi)
									Option: charging hoses with isolation valve

Blondelle Isolation Valves for CO2 Hoses - Transcritical

200Bar working pressure



- Optional valves for CO2 hoses
- 200Bar working pressure
- CO2 / R744 (LP & HP)
- 1/4"SAE male - 1/4"SAE female swivel nut

Reference	Description
AC0107-R744	CO2 Transcritical Hose Shut-off valve

Blondelle CO2 Charging Equipment

Liquid & Gas



- Refrigerant: R744 (CO2)
- Charging equipment with regulator for CO2
- Liquid & Gas - Dedicated liquid filler adaptor
- Choice between 60 or 300 Bar pressure inlet
- Choice between: 10 - 50 - 200 Bar pressure reducer
- 1,8m highpressure hose with anti-whip cable
- 1/4"SAE female
- Direct connection on the CO2 bottle



Version	Hose	Isolation valve	Liquid connector	Reference		Pressure (max.)	
				Reducer	Type	Inlet	Outlet
Complete	x	x	x	FR4612			
Without Acc.				FR4602			
					E25	60Bar	10Bar
					E35	300Bar	50Bar
					E36	300Bar	200Bar



Blondelle CO2 Manifold with Quick-Couplers

Transcritical CO2 applications with SAE J639 Quick-Couplers



- Refrigerant: R744 (CO2)
- Transcritical: 80 bar & 160 bar (°F & PSI)
- 2 lane manifold, aluminium body
- Unique spindle valves, always tight without effort
- Class 1, 'A Lame Acier' Ø 80 gauges, Oil filled
- Hoses of 1,5m. Optional: Different lengths / Safety cable / Stainless steel sleeve

Supplied in a Blondelle plastic carrying case including:
 Transcritical: 2 hoses, length 1,5meter with 1/4"SAE-1/4"NPT fittings for QCs, WP 200 Bar
 + 1 service hose 1,5m, 1/4"SAE-1/4"SAE WP 200 Bar

Material	Other specs	Gauges		Reference			Scales							
		Diameter	Type	Manifold	Dial	Option	bar	psi	Refrigerants					
Aluminium	Refrigeration SAE-J639 Airco SAE-J639 DIN SPEC74119	80 mm	Oil filled	FR4414										
										FR4424	E25	x		R744 (-1+80 Bar, -1+160 Bar)
											E30	x		R744 (-1+100Bar, -1+160Bar)
											E37	x	x	R744 (-1+80/1200, -1+160/2300 Bar/Psi)
					V				Option: charging hoses with shut-off valve					

Blondelle Refrigeration & Airconditioning CO2 Quick Couplers

CO2 Quick-couplers



- CO2 Quick Couplers
- Refrigeration SAE-J639: Reefer Containers, Trucks, Trailers
- Automotive airconditioning: SAE-J639 & DIN SPEC 74119
- CO2 / R744 (LP & HP)
- Pressure rating 200Bar

Reference	Description
FR1501-8793	CO2 LP quick coupler - refrigeration
FR1501-8794	CO2 HP quick coupler - refrigeration
FR1501-8795	CO2 LP quick coupler - automotive airconditioning
FR1501-8796	CO2 HP quick coupler - automotive airconditioning



Blondelle 2 Lane NH3 Manifold

Total ammonia resistant manifold



- Completely ammonia resistant design
- All parts in contact with ammonia are stainless (inox 316L)
- 2 lane manifold (also available in 4-way on demand)
- Unique spindle valves, always tight without effort
- Class 1, 'A Lame Acier' Ø 80 or Ø 100 gauges
- Dry, oil filled (Ø 80), pulse-free

Supplied in a Blondelle plastic carrying case including: 3 hoses, length 1,5 meter with 1/4" GAS-1/4"GAS or 1/4"GAS-1/4"SAE fittings.

Material	Other specs	Gauges		Reference			Scales		
		Diameter	Type	Manifold	Dial	Option	bar	psi	Refrigerants
Aluminium	Complete case (1/4"GAS-1/4"GAS)	80 mm	Dry	FR2102					
			Oil filled	FR2302					
			Pulse-free	FR2502					
		100 mm	Dry	FR2103					
			Pulse-free	FR2503					
	Complete case (1/4"GAS-1/4"SAE)	80 mm	Dry	FR2602					
			Oil filled	FR2702					
			Pulse-free	FR2802					
		100 mm	Dry	FR2603					
			Pulse-free	FR2803					
	Case without hoses	80 mm	Dry	FR3102					
			Oil filled	FR3302					
			Pulse-free	FR3502					
100 mm		Dry	FR3103						
		Pulse-free	FR3503						
				E26		x		R717 (-1+10 Bar, -1+30 Bar)	
				E31		x		R717+R723 (-1+10 Bar, -1+30 Bar)	

How to read the tables?

The complete designation of a manifold comprises on the one hand the references of the manifold and gauge and on the other hand the reference of the refrigerants.

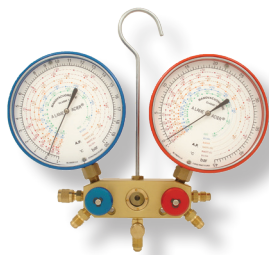
E.g.: 2 lane aluminium manifold, complete case, 80mm gauges, oil filled, refrigerant: NH3:

Manifold: FR2302; Refrigerants: E26; Reference: FR2302-E26



Blondelle 2 Lane Manifold, Ø 100

All refrigerants in one manifold.



- All combinations of refrigerants possible, up to 6 on 1 dial.
- Unique spindle valves, always tight without effort
- Class 1, 'A Lame Acier' gauges
- Ø 100, pulse-free

- 2 lane manifold
- Sight glass and hook
- Available with or without the appropriate charging hoses

Supplied in a Blondelle plastic carrying case including: 3 charging hoses, red, yellow and blue; length 1 m with 1/4" SAE fitting. Option: 1/4" SAE – 5/16" SAE adaptors

Material	Other	Gauges		Reference			Scales		
		Diameter	Type	Manifold	Dial	Option	bar	psi	Refrigerants
Aluminium	Complete case	100 mm	Pulse-free	FR5802	E100		x		R22+R134a+R404A+R410A+R407C vap/liq
					E42		x		R134a+R404A
						A	Description of the option		
							2 1/4" SAE-5/16" SAE adaptors		

Other refrigerant combinations are possible.
See p. 34-41 (Blondelle D100 gauge) or contact Panimpex.

Blondelle Accessories for Manifolds



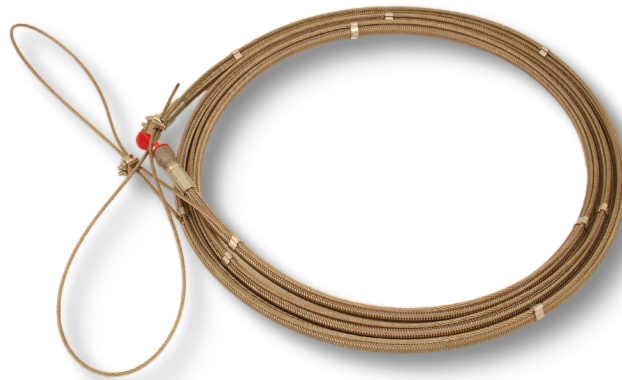
Part	Specification	Reference
Hook	All	AC0101
Carrying case	HFCs-HFOs & NH3	AC0102-02
	CO2 Transcritical	AC0102-03
Valve kit	HFCs-HFOs	AC0103-RES
Valve gaskets	HFCs -HFOs	AC0103-VAN
	CO2 Transcritical	AC0103-VAN-CO2
	NH3	AC0103-VAN-NH3
		AC0103-VAN-CEN
Central valve service kit	Central valve	AC0103-VAN-CEN
Valves	Blue (LP)	AC0104-BP-KIT
	Red (HP)	AC0104-HP-KIT
	Yellow (Vac.)	AC0104-VI-KIT
	Black (Charge)	AC0104-CH-KIT
	CO2 Transcr. Blue	AC0104-BP-CO2
	CO2 Transcr. Red	AC0104-HP-CO2
	CO2 Transcr. Yellow	AC0104-VI-CO2
	CO2 Transcr. Black	AC0104-CH-CO2
	NH3 Blue (LP)	AC0104-BP-NH3-KIT
	NH3 Red (HP)	AC0104-HP-NH3-KIT
Sight glass service kit	HFCs-HFOs	AC0106-7393
Anti-impact protection (only for vertical fitting)	Ø 60 mm Red	AC0308-6123.02
	Ø 60 mm Blue	AC0308-6123.03
	Ø 60 mm Yellow	AC0308-6123.04
	Ø 80 mm Red	AC0308-6124.02
	Ø 80 mm Blue	AC0308-6124.03
	Ø 80 mm Yellow	AC0308-6124.04



BLONDELLE ACCESSORIES

HOSES & SPARES

AUTOMOTIVE & WHITE GOODS





Blondelle Charging Hoses



- Hoses for all HFCs and HFOs as well as for CO² and NH₃
- Working pressures ranging from 40 bar to 285 bar (depending on diameter and material)
- Diameter : 1/4", 5/16", 3/8", 1/2", 5/8", 3/4", 1", 2"
- Material : Standard refrigeration hoses, reinforced thermoplastic or braided stainless steel
- Gaskets: neoprene, teflon, copper
- Fittings: standard is female, also available in male, other threads available on demand
 1/4"SAE, 5/16"SAE, 3/8"SAE, etc.
 1/4"GAS, 3/8"GAS, 1/2"GAS, 3/4"GAS, etc.
 1/4"NPT, 1/2"NPT, 1"NPT, 2"NPT, etc.
- The standard lengths are 1m, 1,5m, 2m, 3m and 5m (other lengths available on demand)
- Anti-whip cable on selected models (available on other types on demand)

Hose	Diameter	Strength - Use - Type	Fittings	Gasket	Color	Length (cm)
X	x	x	X	x	x	-xxx
S	4 (1/4")	0 40bar - HFC/HFO	A R-1/4SAE - G-1/4SAE - BR - SD	0 Neoprene	2 Red	100
		1 55bar - R410A/R32/R744Sub	B R-1/4SAE - G-1/4SAE-BV - BR - SD	1 Teflon (SAE)	3 Blue	150
	8 (3/8")	2 200bar - CO ₂ /NH ₃ - thermoplastic & braided	C R-1/4SAE - G-5/16SAE - BR - SD	2 Copper	4 Yellow	200
		3 135bar - CO ₂ /NH ₃ - braided	D R-1/4SAE - G-5/16SAE-BV - BR - SD	3 Teflon (GAS)	5 Black	300
		4 175bar - CO ₂ /NH ₃ - thermoplastic	E R-1/4SAE - R-1/4SAE - GS	4 None	6 Braided	500
	2 (1/2")	5 285bar - CO ₂ /NH ₃ - double braided	F R-1/4SAE - R-1/4NPT - GS			1000
		6 120bar - CO ₂ /NH ₃ - braided	G R-1/4SAE - R-3/8SAE - BR - SD			1500
	5 (5/8")	7 140bar - CO ₂ /NH ₃ - thermoplastic	H R-1/4GAS - R-1/4GAS - GS			2000
		8 105bar - CO ₂ /NH ₃ - thermoplastic	I R-3/8SAE - G-3/8SAE - BR - SD			2500
	10 (1")	9 50bar - CO ₂ /NH ₃ - braided	J R-1/4SAE - R-1/4SAE - BR - SD			3000
	20 (2")	10 34bar - CO ₂ /NH ₃ - braided	K R-3/8SAE - R-3/8SAE - BR - SD			5000
	6 (3/4")	11 90bar - CO ₂ /NH ₃ - braided	L R-1/4GAS - R-1/4SAE - GS			
	9 (5/16")	12 90bar - CO ₂ /NH ₃ - thermoplastic	M R-5/16SAE - G-5/16SAE - BR - SD			
13 190bar - CO ₂ /NH ₃ - thermoplastic		N G-1/4SAE-BV - G-1/4SAE-BV - BR - SD				
		O R-5/16SAE - G-5/16SAE-BV - BR - SD				
		P R-1/4SAE - R-1/4SAE - GS - AW				
		Q R-3/8SAE - R-3/8SAE - GS - AW				
		R R-1/4NPT - R-1/4NPT - GS				
		S R-3/8GAS - R-3/8GAS - GS - AW				
		T R-1/4SAE - R-1/4SAE - GS - SD - AW				
		U R-1/2GAS - R-1/2GAS - GS				
		V R-1/4SAE - R-1/4SAE - GS - SD				
		W R-1/4SAE - R-1/4SAE - GS - AW -PP				
		Y R-1/4SAE - G-1/4SAE - GS - AW				
		Z R-1/4SAE - R-1/4GGS-M				

Fittings are standard Female unless otherwise mentionned (M - Male)
R - Straight fitting
G - Bent fitting
M - Male fitting
BR - Brass
GS - Galvanized Steel
BV - Ball Valve
SD - Schraeder Depressor (2nd side)
AW - Anti-Whip Cable
PP - Plastic Protection (only on braided)
LH - Left Hand Thread



Hose	Diameter	Strength - Use - Type	Fittings	Gasket	Color	Length (cm)
X	x	x	X	x	x	-xxx
S	4 (1/4)	0 40bar - HFC/HFO	AC R-3/8SAE - R-3/8SAE - GS	0 Neoprene	2 Red	100
		1 55bar - R410A/R32/R744Sub	AD R-1/4GAS - R-1/2GAS - GS	1 Teflon (SAE)	3 Blue	150
		2 200bar - CO2/NH3 - thermoplastic & braided	AE R-1/4SAE - R-1/4NPT-M - GS - AW	2 Copper	4 Yellow	200
	8 (3/8)	3 135bar - CO2/NH3 - braided	AF R-3/8SAE-M - R-3/8SAE-M - GS	3 Teflon (GAS)	5 Black	300
		4 175bar - CO2/NH3 - thermoplastic	AG R-3/8SAE-M - R-3/8SAE-M - GS - AW	4 None	6 Braided	500
		5 285bar - CO2/NH3 - double braided	AH R-1/2GAS-M - R-1/2GAS-M - GS			1000
	2 (1/2)	6 120bar - CO2/NH3 - braided	AI R-1/2GAS-M - R-1/2GAS-M - GS - AW			1500
		7 140bar - CO2/NH3 - thermoplastic	AJ R-1/2GAS - R-1/2GAS - GS - AW			2000
	5 (5/8")	8 105bar - CO2/NH3 - thermoplastic	AO R-1/4SAE - R-1/4NPT - GS - AW			2500
	10 (1")	9 50bar - CO2/NH3 - braided	AP R-1"NPT-M - R-1"NPT-M - GS			3000
	20 (2")	10 34bar - CO2/NH3 - braided	AQ R-2"NPT-M - R-2"NPT-M - GS			5000
	6 (3/4")	11 90bar - CO2/NH3 - braided	AR R-3/4GAS - R-3/4GAS - GS			
		12 90bar - CO2/NH3 - thermoplastic	AS R-3/8GAS-LH - R-1/4SAE-M - GS			
9 (5/16")	13 190bar - CO2/NH3 - thermoplastic	AT R-5/16SAE - R-5/16SAE - BR				
		AU R-5/16SAE - G-1/4SAE - BR				
		AV R-1/2SAE - G-1/2SAE - GS - AW				
		AW R-1/2SAE - R-1/2SAE - GS				
		AX R-3/4GAS - R-3/4GAS - GS - AW				
		AY R-3/8GAS - R-3/8GAS - GS				

Fittings are standard Female unless otherwise mentionned (M - Male)
R - Straight fitting
G - Bent fitting
M - Male fitting
BR - Brass
GS - Galvanized Steel
BV - Ball Valve
SD - Schraeder Depressor (2nd side)
AW - Anti-Whip Cable
PP - Plastic Protection (only braided)
LH - Left Hand Thread



How to read the tables? Run through the table from left to right and choose the desired diameter, strength - use - type, fittings, gaskets, color and length.
 E.g.: Reference: S83Q46-300 : (S)Hose, (8)3/8", (3)working pressure 135Bar - CO2/NH3 - braided stainless steel, (Q)3/8SAE-3/8SAE, (4)no gaskets, (6)braided, (300)3m



Blondelle Charging Hoses - Typical versions

Set of charging hoses for CFC, HCFC and HFC							
Colour	Refrigerant	Fitting	Gaskets	Extra	Type	Length	Explanation
Red	Standard	Straight side 1/4" SAE - Bow side 1/4" SAE	Neoprene		S40A02	100 150 200 300 500 >5m	100 cm 150 cm 200 cm 300 cm 500 cm on demand
			Neoprene	Ball valve	S40B02		
		Teflon		S40A12			
		Teflon	Ball valve	S40B12			
Blue	R410A	Straight side 1/4" SAE - Bow side 5/16" SAE	Teflon		S41C12		
			Teflon	Ball valve	S41D12		
Blue	Standard	Straight side 1/4" SAE - Bow side 1/4" SAE	Neoprene		S40A03		
			Neoprene	Ball valve	S40B03		
			Teflon		S40A13		
			Teflon	Ball valve	S40B13		
Yellow	R410A	Straight side 1/4" SAE - Bow side 5/16" SAE	Teflon		S41C13		
			Teflon	Ball valve	S41D13		
Yellow	Standard	Straight side 1/4" SAE - Bow side 1/4" SAE	Neoprene		S40A04		
			Neoprene	Ball valve	S40B04		
					Teflon		S40A14
					Teflon	Ball valve	S40B14
					Straight side 1/4" SAE - Straight side 3/8" SAE	Neoprene	S40G04
					Straight side 1/4" SAE - Straight side 1/4" SAE	Teflon	S40J04
			Neoprene	S40J14			
			Teflon	S40J14			

Hoses for CO2 (R744) & NH3 (R717)									
Colour	Refrigerant	Fitting	Gaskets	Extra	Type	Length	Explanation		
Red	CO2 Subcritical	Straight side 1/4" SAE - Bow side 1/4" SAE	Teflon		S41A12	100 150 200 300 500 >5m	100 cm 150 cm 200 cm 300 cm 500 cm on demand		
Blue	CO2 Subcritical	Straight side 1/4" SAE - Bow side 1/4" SAE	Teflon	Ball valve	S41B12				
			Teflon		S41A13				
Yellow	CO2 Subcritical	Straight side 1/4" SAE - Bow side 1/4" SAE	Teflon	Ball valve	S41B13				
			Teflon		S41A14				
			Teflon	Ball valve	S41B14				
Black	CO2 Transcritical	Straight side 1/4" SAE - Straight side 1/4" SAE	Copper		S42E25				
	NH3	Straight side 1/4" GAS - Straight side 1/4" GAS	PTFE		S42H35				
	NH3	Straight side 1/4" GAS - Straight side 1/4" SAE	PTFE		S42L35				
Braided	CO2 Transcritical	Straight side 1/4" SAE - Straight side 1/4" SAE	Copper	Schraeder Depressor	S42V25			150	150 cm
			Copper		S42P26			100	100 cm
								200	200 cm
					300	300 cm			
					500	500 cm			
					2000	20 m			
		Braided stainless steel with safety cable, 1/4" SAE - 1/4" SAE	Copper	Schraeder Depressor	S42T26	300	300 cm		
		Braided stainless steel with safety cable, 3/8" SAE - 3/8" SAE	Copper		S83Q46	300	300 cm		



Blondelle Charging Hoses - Typical sets

Set of charging hoses for CFC, HFC, HCFC, CO2 & NH3							
Refrigerant	Fitting	Gaskets	Length	Extra	Type		
Standard, WP 40bar	1/4"SAE - 1/4"SAE	Neoprene	100 cm		T3AA		
			150 cm	Ball valve	T3AB		
					T3AC		
				Ball valve	T3AD		
			200 cm		T3BI		
			300 cm	Ball valve	T3BG		
		Teflon	100 cm		T3AE		
				Ball valve	T3AF		
			150 cm		T3AG		
				Ball valve	T3AH		
			200 cm		T3BJ		
				Ball valve	T3BH		
R410A, WP 55bar	3/8"SAE - 3/8"SAE	Teflon	500 cm		T3BK		
			1000 cm	Ball valve	T3BN		
			100 cm		T3AM		
			150 cm		T3AO		
			1/4"SAE-5/16"SAE	Teflon	100 cm		T3AI
						Ball valve	T3AJ
CO2 Subcritical, WP 55bar	1/4"SAE-1/4"SAE	Teflon	150 cm		T3AK		
				Ball valve	T3AL		
			200 cm		T3BL		
				Ball valve	T3BM		
			100 cm		T3AQ		
				Ball valve	T3AZ		
CO2 Transcritical, WP 200bar	1/4"SAE-1/4"SAE	Copper	150 cm		T3AR		
				Ball valve	T3BA		
			200 cm		T3BC		
			100 cm		T3BD		
			150 cm		T3BE		
			300 cm		T3DV		
NH3, WP 200bar	1/4"GAS-1/4"GAS	EPDM	500 cm		T3DM		
			100 cm		T3AV		
			150 cm		T3AW		
	1/4"GAS-1/4"SAE		100 cm		T3AX		
			150 cm		T3AY		
			300 cm		T3DQ		
CO2 Transcritical, WP-200Bar Braided stainless steel, with Safety Cable	1/4"SAE-1/4"SAE	Copper	500 cm		T3DW		



Spare Parts	Type	Reference
Bag of 6 gaskets	Neoprene (1/4"SAE)	AC0103-TUYN
	Teflon (1/4"SAE)	AC0103-TUYT
	Copper (1/4"SAE CO2Tr.)	AC0103-TUYC
	Teflon (1/4"GAS)	AC0103-TUYE
Bag of 3 Schrader depressors	/	AC0105

Blondelle Residential - White Goods

Gauges & Manifolds for White goods appliances



- 7bar - 100 psi gauge with extended vacuum zone in inhg and mbar
- With or without Refrigerant temperature : R134a & R600a
- Developed for the residential service engineer

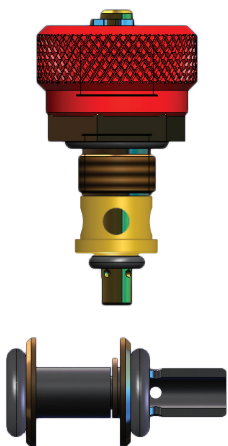
- Unique spindle valve, always tight without effort
- Class 1, 'A Lame Acier' Ø 80 oil filled gauge

Reference	Description
FR1002-E35	Manifold with gauge, hoses, hook and gasket service kit
FR1002-E35V	Manifold with gauge, hoses with ball valves, hook and gasket service kit
MA1003V18B-1198	Replacement gauge with 1/8"NPT connection

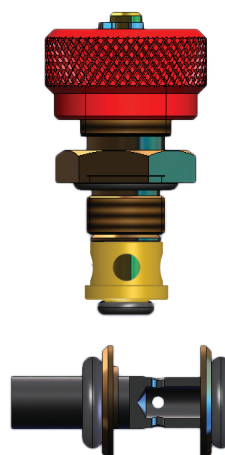
Blondelle Spindle Valve Mechanism

Unique valve, always tight without effort

Valve closed



Valve opened





Blondelle F-GAS - PED Calibration Gauge

High precision gauge with 'aged and stabilised' mechanics - 3 pressure ranges



- PED Calibration gauge
- Used for PED pressure testing and for verification of service manifolds
- Comes with a certificate referring to a higher standard
- Aged and stabilised mechanics

- Class 0,5
- 'A Lame Acier', dry gauge
- 25Bar Ø100, 60Bar Ø150, 180Bar Ø100
- Storage case

Reference:

- 0-25Bar : MA1202V14S-4031-82-CET
- 0-60Bar : MA1305V14S-9038-82-CET
- 0-180Bar : MA1202V14S-4016-82-CET



Blondelle Automotive

Automotive tools & accessories



- Refrigerant: R134a & HFO R1234yf & R1234ze & R744 (CO2)
- 2 lane manifold, aluminium body
- Unique spindle valves, always tight without effort
- Class 1, 'A Lame Acier' Ø 80 gauges
- Dry, oil filled (Ø 80), pulse-free

Supplied in a Blondelle plastic carrying case including:
2-way manifold with hook, 3 hoses, red, blue and yellow, length 1 meter with 1/4" SAE fittings.

Material	Other specs	Gauges		Reference			Scales		
		Diameter	Type	Manifold	Dial	Option	bar	psi	Refrigerants
Aluminium	Complete case & hoses	80 mm	Dry	FR1104	E38	x	x	R134a+R1234yf+R1234ze	
			Oil filled	FR1304					
	Pulse-free	FR1202							
	Oil filled	FR4424							
Complete case & hoses & Quick Couplers Airco SAE-J639 DIN SPEC74119	80 mm	Oil filled	FR4424	E25	x		R744 (-1+80 Bar, -1+160 Bar)		
				E37	x	x	R744 (-1+80/1200, -1+160/2300 Bar/Psi)		
						V	Option: charging hoses with ball valve		

How to read the tables?

The complete designation of a manifold comprises on the one hand the references of the manifold and gauge and on the other hand the reference of the refrigerants.
E.g.: 2 lane aluminium manifold, complete case, 80mm gauges, oil filled: Manifold: FR1304; Refrigerants: E38; Reference: FR1304-E38

Blondelle Automotive Quick Couplers

Standard / OEM - BMW / CO2



- Automotive airconditioning quick couplers
- Standard (LP & HP)
- BMW (OEM-version)
- CO2 / R744 (LP & HP) - Automotive airconditioning: SAE-J639 & DIN SPEC 74119



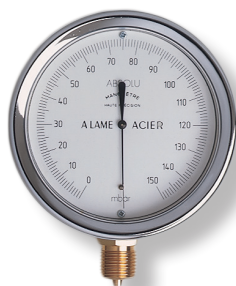
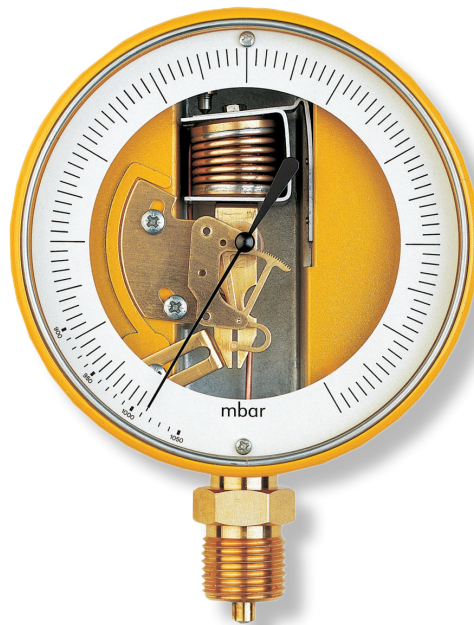
Reference	Description
FR1501-6472	LP quick coupler
FR1501-6473	HP quick coupler
FR1501-6475	HP BMW quick coupler (OEM)



Reference	Description
FR1501-8795	CO2 LP quick coupler - automotive airconditioning
FR1501-8796	CO2 HP quick coupler - automotive airconditioning



BLONDELLE VACUUM GAUGES





Blondelle Vacuum Gauge, Ø 60, Composite

High-end vacuum gauge



- High accuracy vacuum gauge
- Vacuum gauge: -760 mmHg to 0 or -1000 mbar to 0
- Pseudo-absolute: 0 +1000 mbar or 0 +1000 mbar/inHg
- Class 1, 'A Lame Acier'

- Ø 60, dry or oil filled
- Outlet: vertical or rear
- Fitting: 1/4" SAE or 1/8" NPT
- Options: safety valve, indicator needle, 1/4" SAE female fitting

Version	Outlet	Fitting	Reference			Scales	
			Case	Dial	Option	Relative	Pseudo-absolute
Dry	Vertical	1/4" SAE	MA0602V14S			-760 mmHg to 0 -1000 mbar to 0	0+1000 mbar
		1/8" NPT	MA0602V18B				
	Rear	1/4" SAE	MA0602A14S				
		1/8" NPT	MA0602A18B				
Oil filled	Vertical	1/4" SAE	MA1002V14S				
		1/8" NPT	MA1002V18B				
	Rear	1/4" SAE	MA1002A14S				
		1/8" NPT	MA1002A18B				
				6099			
				6103			
			6089				
						Description of the options	
					28	Safety valve (+60Bar)	
					01	Indicator needle (not for oilfilled)	
					45	1/4" SAE female fitting	
					AC	Anti-impact protection	

How to read the tables?

The complete designation of a vacuum gauge comprises the reference of the casing, followed by the reference of the dial.

E.g.: Vacuum gauge D60mm composite, oil filled, rear outlet, 1/4"SAE, -1000mbar to 0, needle indicator:
Case: MA1002A14S; Dial: 6103; Option 01; Reference: MA1002A14S-6103-01



Blondelle Vacuum Gauge, Ø 80, Composite

High-end vacuum gauge



- High accuracy vacuum gauge
 - Vacuum gauge: -760 mmHg to 0 or -1000 mbar to 0
 - Pseudo-absolute: 0 +1000 mbar or 0 +1000 mbar/inHg
 - Class 1, 'A Lame Acier'
-
- Ø 80, dry, oil filled or pulse-free
 - Outlet: vertical or rear
 - Fitting: 1/4" SAE or 1/8" NPT
 - Options: safety valve, indicator needle, 1/4" SAE female fitting

Version	Outlet	Fitting	Reference			Scales	
			Case	Dial	Option	Relative	Pseudo-absolute
Dry	Vertical	1/4" SAE	MA0603V14S			-760 mmHg to 0 -1000 mbar to 0	0+1000 mbar
		1/8" NPT	MA0603V18B				
	Rear	1/4" SAE	MA0603A14S				
		1/8" NPT	MA0603A18B				
Oil filled	Vertical	1/4" SAE	MA1003V14S				
		1/8" NPT	MA1003V18B				
	Rear	1/4" SAE	MA1003A14S				
		1/8" NPT	MA1003A18B				
Pulse-free	Vertical	1/4" SAE	MA0901V14S				
		1/8" NPT	MA0901V18B				
	Rear	1/4" SAE	MA0901A14S				
		1/8" NPT	MA0901A18B				
				6100			
				6104			
				6090			
						Description of the options	
					28	Safety valve (+60Bar)	
					01	Indicator needle (not for oilfilled)	
					45	1/4" SAE female fitting	
					AC	Anti-impact protection	

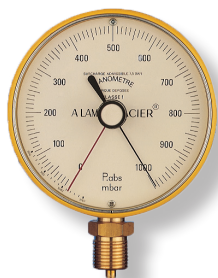
How to read the tables?

The complete designation of a vacuum gauge comprises the reference of the casing, followed by the reference of the dial.

E.g.: Vacuum gauge D80mm composite, dry, rear outlet, 1/4"SAE, 0+1000mbar, needle indicator, safety valve: Case: MA0603A14S; Dial: 6090; Option: 2801; Reference: MA0603A14S-6090-2801

Blondelle Vacuum Gauge Ø100, Aluminium

High-end vacuum gauge



- High accuracy vacuum gauge
- Absolute reading possible by adjusting the needle to the day's atmospheric pressure
- Ø 100, aluminium case
- Class 1, 'A Lame Acier'

- Fitting: 1/2" GAZ, 1/4" SAE or 1/8" NPT
- Dry
- Options: safety valve, indicator needle, 1/4" SAE female fitting

Version	Outlet	Fitting	Reference			Scale	
			Case	Dial	Option	Pseudo-absolute	
Dry	Vertical	1/2" GAZ 1/8" NPT 1/4" SAE	MA0107V12G MA0107V18B MA0107V14S	1175 4040 6095		-250mbar+0	
						-500mbar+500mbar	
						0+1000 mbar	
						Description of the options	
						28	Safety valve (+60Bar)
01	Indicator needle						
				45		1/4" SAE female fitting	

How to read the tables?

The complete designation of a vacuum gauge comprises the reference of the casing, followed by the reference of the dial.

E.g.: Pseudo-Absolute Vacuum gauge D100mm aluminium, dry, vertical outlet, 1/2"GAZ, 0+1000mbar, indicator: needle. Case: MA0107V12G; Dial: 6095; Option: 01; Reference: MA0107V12G-6095-01

Blondelle 4 Lane Manifold 'Special Vacuum'



- Unique spindle valves, always tight without effort
- Class 1, 'A Lame Acier' Ø 80 gauges
- 4 lanes - 4 valves
- Ø 80

- All combinations of refrigerants
- Oil filled
- Sight glass and hook
- Available with or without the appropriate charging hoses

Supplied in a Blondelle plastic carrying case including:

3 charging hoses; red, yellow and blue; length 1,5 m with 1/4" SAE fitting and 1 yellow charging hose, length 1 m with 3/8" fitting. For R410A High Resistance hoses with Teflon gaskets. Red and blue hoses are fitted with a 5/16" nut at the curved side. Optional: ball valves.

References: see p.36

Blondelle Absolute Vacuum Gauge, Ø 100, Alu

Extreme precision



- High accuracy vacuum gauge
- Built-in absolute vacuum reference
- Eliminates the effects due to variations of the atmospheric pressure
- No re-adjustment of the needle to 0 is required

- 1,5 mBar precision
- Ø 100, aluminium case
- Dry
- Fitting: 1/2" Gaz or 1/4" SAE

Version	Outlet	Fitting	Reference			Scales Absolute					
			Case	Dial	Option						
Dry	Vertical	1/2" GAZ 1/4" SAE	MA1501V12G MA1501V14S	6098		0+150 mbar					
						Description of the option					
						28	Safety valve (+60Bar)				
					45	1/4" SAE female fitting					

How to read the tables?

The complete designation of a vacuum gauge comprises the reference of the casing, followed by the reference of the dial.

E.g.: Absolute Vacuum gauge D100mm aluminium, dry, vertical outlet, 1/4"SAE, 0+150mbar

Case: MA1501V14S; Dial: 6098 Reference: MA1501V14S-6098

Blondelle 1 Lane Manifold with Vacuum Gauge



- Unique spindle valve, always tight without effort
- Class 1, 'A Lame Acier'
- Ø 60 & Ø 80 gauge
- Dry, oil filled or pulse-free (Ø 80 only)
- Available with the appropriate charging hoses

Supplied with gauge mounted on 1-way manifold including 2 yellow charging hoses, length 1 m with 1/4" SAE fitting. Options: safety valve, indicator needle, 1/4" SAE female fitting, ball valves.

Ø 60 Manifold Material	Vacuum gauge Type	Reference			Scales	
		Manifold	Scales	Options	Relative	Pseudo-absolute
Aluminium	Dry Oil-filled	FR0801			-760 mmHg to 0 -1000 mbar to 0	0+1000 mbar
		FR1001				
			6099			
			6103			
			6089			
				28	Description of the options	
				01	Safety valve (+60Bar)	
				V	Indicator needle (not for oilfilled)	
					Charging hoses length 1m with ball valve	
				AC	Anti-impact protection	

Ø 80 Manifold Material	Vacuum gauge Type	Reference			Scales	
		Manifold	Scales	Options	Relative	Pseudo-absolute
Aluminium	Dry Oil-filled Pulse-free	FR0802			-760 mmHg to 0 -1000 mbar to 0	0+1000 mbar
		FR1002				
		FR0901				
			6100			
			6104			
				6090		
				28	Description of the options	
				01	Safety valve (+60Bar)	
				V	Indicator needle (not for oilfilled)	
					Charging hoses length 1m with ball valve	
				AC	Anti-impact protection	

How to read the tables?

The complete designation of a manifold comprises on the one hand the references of the manifold and vacuum gauge and on the other hand the reference of the scale.
 E.g.: 1-lane aluminium manifold, 80mm gauge, oil filled, charging hoses length 1m with ball valve, scale:-1000mbar to 0: Manifold: FR1002; Scale: 6104; Reference: FR1002-6104-V



SUPER-SEAL





Super Seal

Seals and dries



- 947KIT - Super Seal Advanced, ACR, Professional Formula, for smaller systems. (<5kW)
- 944KIT - Super Seal Advanced, HVACR, Professional Formula, for most residential systems. (5kW – 17kW)
- 948KIT - Super Seal Advanced, Commercial, Commercial and Industrial Strength Formula. (>17kW)
- 946KIT - Super Seal Advanced, Automotive – Premium

- Advanced sealing power with DRY R™ to eliminate 20 drops of water and prevent acid & waxing
- Faster – no recovery, no pump down
- Contaminant free
- Contains no butane or propane
- Compatible with all oils & refrigerants

- Delivered with manual and hose



REFRIGERATION TECHNOLOGIES



Big Blu

Micro-leak detector



- Bubble solution
- Sensitivity: 20 grams/year
- Non toxic, non corrosive, biodegradable
- Strong and persistent film
- Approved for use on oxygen systems

Big Blu - Sub-Zero (Super Blu)

Finding leaks in extreme circumstances



- Bubble solution
- Usage under extreme conditions; -35°C to 90°C
- Non toxic, biodegradable
- Approved for use on oxygen systems



Nylog

Install without leaks

Nylog Red



Nylog Blue



- Prevents leakage through refrigeration gaskets and threaded fittings
- Never hardens
- Remains temperature and vibration resilient
- Nylog Red; installations with CFC and HCFC
- Nylog Blue: installations with HFC and HFO

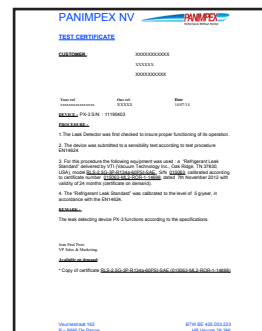
Viper Wet-Rag

Heat-blocking putty



- BETTER THAN A WET RAG
- This reusable heat blocking putty keeps piping and sensitive components cooler than traditional wet rag
- Applications during brazing, soldering, or welding
- It is made from the same materials found in the heat shield of the space shuttle.
- Simply apply, remove, and reuse.
- Reusable like a Wet Rag
- Protects surfaces, valves, and other sensitive parts from heat damage
- Blocks direct and conductive heat transfer
- No mess formula
- Use with Map/Pro, Oxy/Acetylene, Mig, Tig, Arc, and propane torches
- Non-Toxic
- Reusable - For up to 40 applications
- Conductive Heat - Blocks conductive heat transfer to protect sensitive parts
- Direct Heat - Blocks direct heat up to 1100°C
- Indicator Dye - Special dye fades over time to indicate when replacement is needed

MAINTENANCE & CALIBRATION



PX-Calibrate

The only portable, easy-to-store leak with a traceable certificate and a shut-off valve



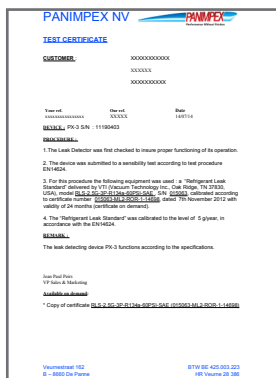
F-GAS COMPLIANT VERIFICATION



- Verify your refrigerant leak detector according to the F-GAS EN14624:2020
- Calibrated reference leak with HFC R134a or HFO R1234yf
- Delivered with a Traceable & Calibrated ISO17025 Certificate on demand for yearly verification
- Shut-off valve - doesn't leak all the time
- 5g/year
- Easy to store
- Sintered leak technology powered by HTP
- Delivered in a compact, easy to store can.
- Versions:
 - PX-Calibrate-CET: R134a leak supplied with ISO17025 traceable certificate for yearly verification
 - PX-Calibrate-HFO-CET: R1234yf leak supplied with ISO17025 traceable certificate for yearly verification

Calibration

Pressure gauges, Vacuum gauges, Temperature gauges, Scales, Recovery Units



- Leak detectors
- Gauges
- Manifolds
- Vacuum gauges
- Electronic manifolds & sensors
- Scales
- Recovery units
- ...
- Contact us for to find out more about our services

Blondelle F-GAS - PED Calibration Gauge

High precision gauge with 'aged and stabilised' mechanics - 3 pressure ranges



- PED Calibration gauge
- Used for PED pressure testing and for verification of service manifolds
- Comes with a certificate referring to a higher standard
- Aged and stabilised mechanics
- Class 0,5
- 'A Lame Acier', dry gauge
- 25Bar Ø100, 60Bar Ø150, 180Bar Ø100,
- Storage case

- Reference:
- 0-25Bar : MA1202V14S-4031-82-CET
 - 0-60Bar : MA1305V14S-9038-82-CET
 - 0-180Bar : MA1202V14S-4016-82-CET



SMART MOBILE MEASURING



GAUGES & VACUUM GAUGES
MANIFOLDS & HOSES



SUPER-SEAL



REFRIGERATION TECHNOLOGIES

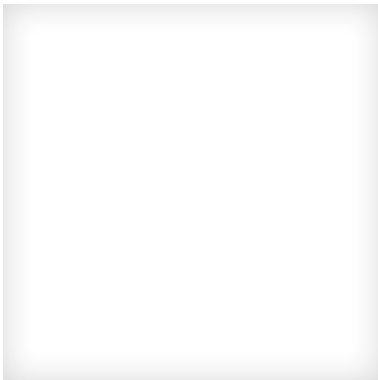
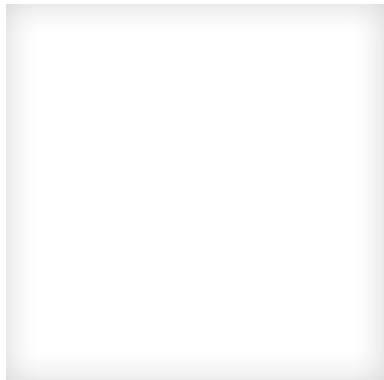
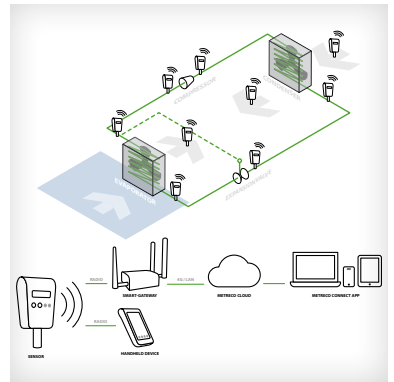
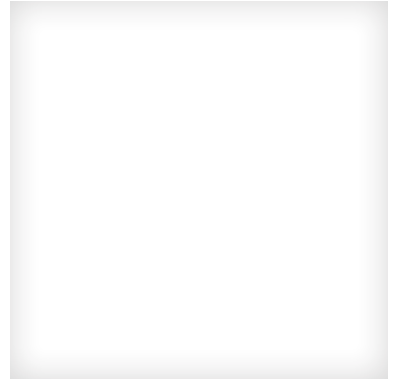
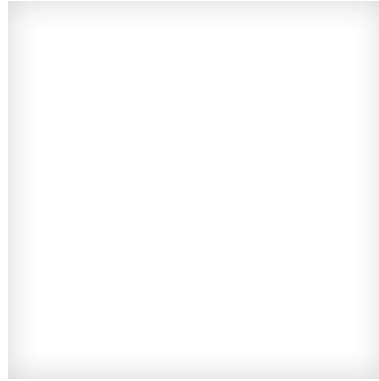
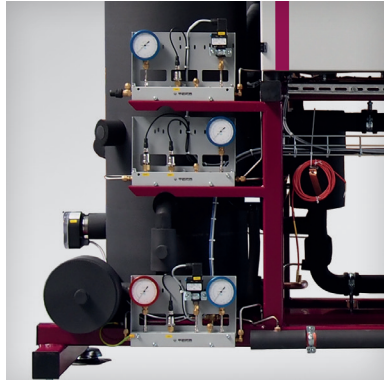


MAINTAINANCE & CALIBRATION




PANIMPEX

Measurement Solutions



2026
ENGLISH


+32 58 42 14 50


info@panimpex.com


panimpex.com